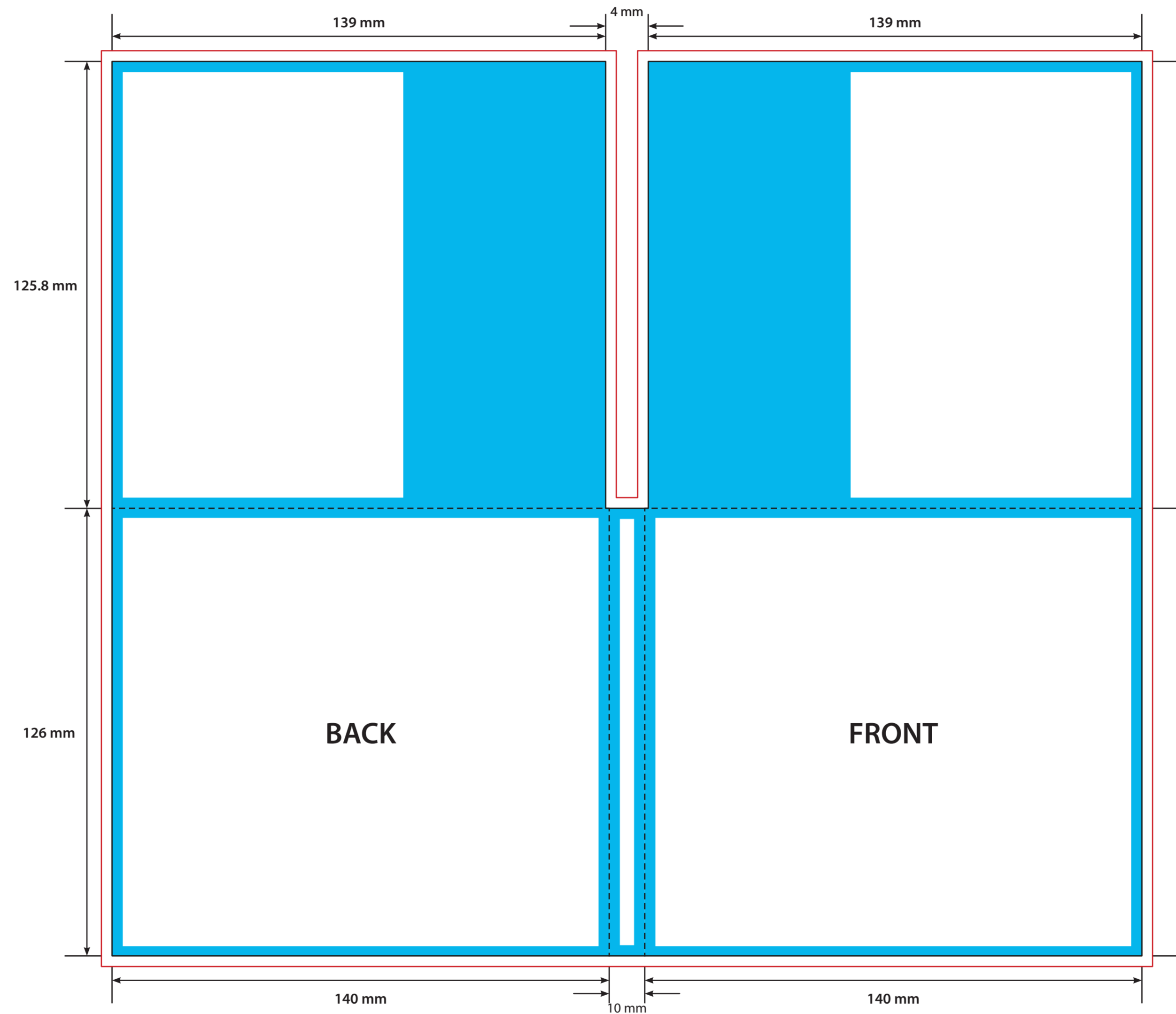




PART 1



KEY

- Trim Line
- Fold Line
- 3mm Safety Area - Important text and logos should not be in this area.
- 3mm Required Bleed Area - Background should extend to this line.

AVAILABLE CARD STOCKS \*

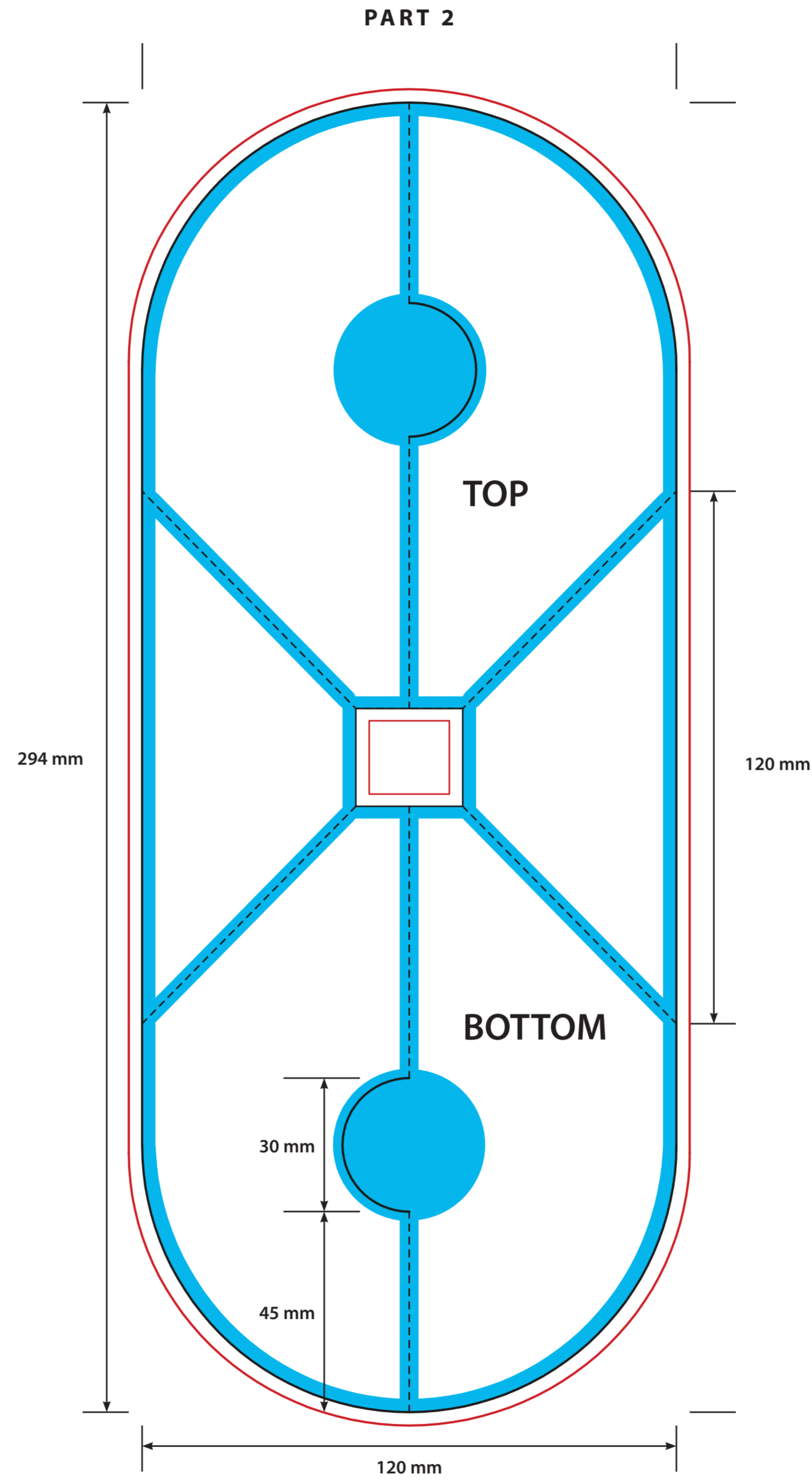
- 270gsm White/White > Standard
- 280gsm White/Grey
- 300gsm White/Brown

CARD FINISHES AVAILABLE

- Gloss Machine Varnish > Standard
- Matt Machine Varnish
- Reverse Board (Uncoated)
- Gloss Lamination
- Matt Lamination
- Anti-Scratch Matt Lamination
- Special Lamination
- (i.e. Holographic Lamination)

Please click [here](#) for useful information on how best to set up and supply your artwork. For any further questions please email our design team [here](#).

Please ask your account manager if you would like to change the stock and/or finish, prices will vary. \* Please note, not all card stocks are available on all templates. Please check with your sales contact.



**KEY**

- Trim Line
- Fold Line
- 3mm Safety Area - Important text and logos should not be in this area.
- 3mm Required Bleed Area - Background should extend to this line.

**AVAILABLE CARD STOCKS \***

- 270gsm White/White > Standard
- 280gsm White/Grey
- 300gsm White/Brown

**CARD FINISHES AVAILABLE**

- Gloss Machine Varnish > Standard
- Matt Machine Varnish
- Reverse Board (Uncoated)
- Gloss Lamination
- Matt Lamination
- Anti-Scratch Matt Lamination
- Special Lamination
- (i.e. Holographic Lamination)

Please click [here](#) for useful information on how best to set up and supply your artwork.  
For any further questions please email our design team [here](#).

Please ask your account manager if you would like to change the stock and/or finish, prices will vary.  
\* Please note, not all card stocks are available on all templates. Please check with your sales contact.