





16 - 1

**KEY**

-  Trim Line
-  Fold Line
-  3mm Safety Area - Important text and logos should not be in this area.
-  3mm Required Bleed Area - Background should extend to this line.

**AVAILABLE CARD STOCKS \***

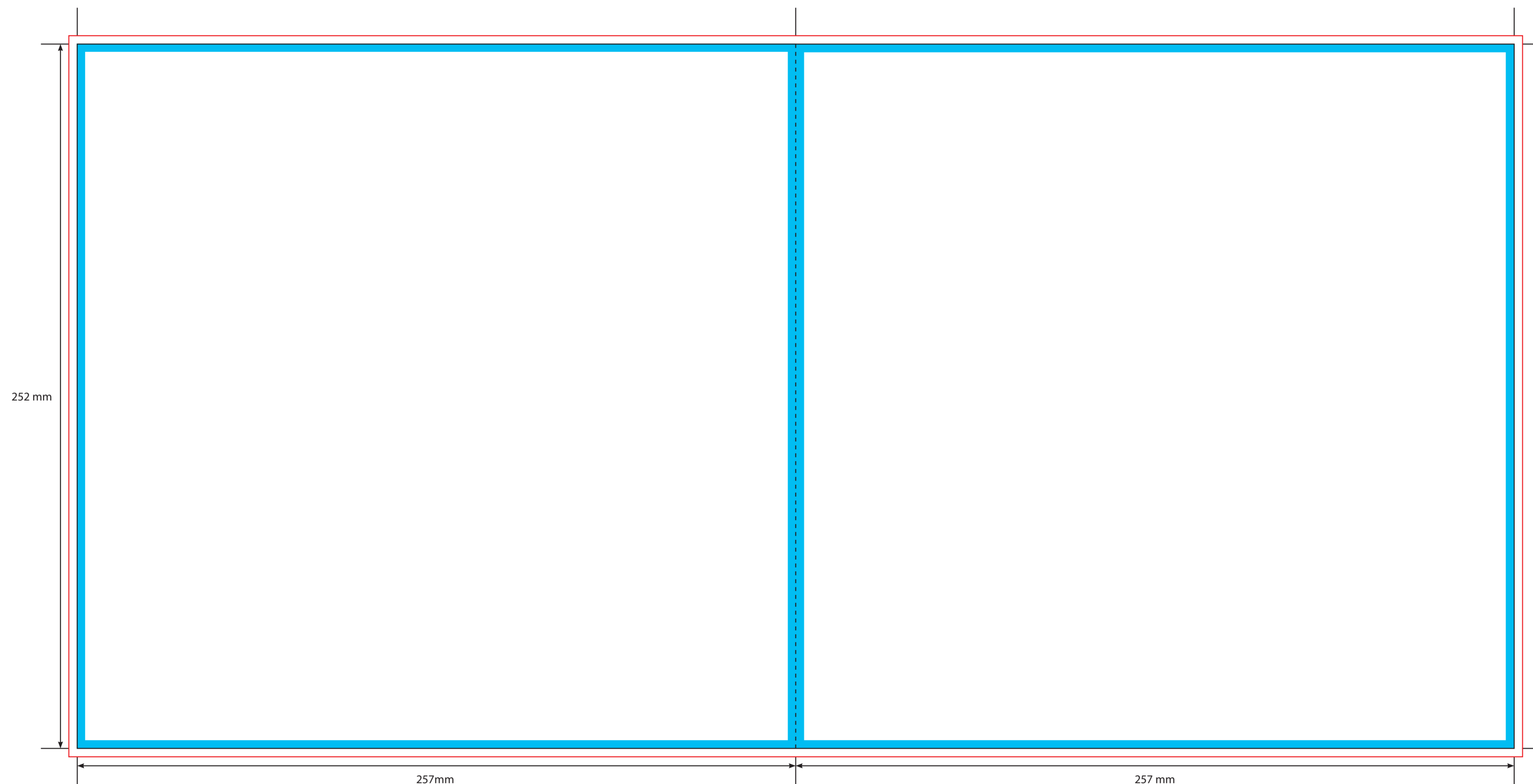
- 150gsm Gloss Art Paper
- 200gsm Gloss Art Paper
- 250gsm Gloss Art Paper
- 190gsm Offset Paper
- 350gsm White/White Card
- 300gsm White/White Card

**CARD FINISHES AVAILABLE**

- Gloss Machine Varnish
- Matt Machine Varnish
- Reverse Board (Uncoated)
- Gloss Lamination
- Matt Lamination
- Anti-Scratch Matt Lamination
- Special Lamination (i.e. Holographic Lamination)

Please click [here](#) for useful information on the best to set up and supply your artwork.  
For any further questions please email our design team [here](#).

Please ask your account manager if you would like to change the stock and/or finish, prices will vary.  
\* Please note, not all card stocks are available on all templates. Please check with your sales contact.



2 - 15

**KEY**

- Trim Line
- - - - - Fold Line
- 3mm Safety Area - *Important text and logos should not be in this area.*
- 3mm Required Bleed Area - *Background should extend to this line.*

**AVAILABLE CARD STOCKS \***

- 150gsm Gloss Art Paper
- 200gsm Gloss Art Paper
- 250gsm Gloss Art Paper
- 190gsm Offset Paper
- 350gsm White/White Card
- 300gsm White/White Card

**CARD FINISHES AVAILABLE**


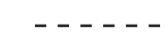


- Gloss Machine Varnish
- Matt Machine Varnish
- Reverse Board (Uncoated)
- Gloss Lamination
- Matt Lamination
- Anti-Scratch Matt Lamination
- Special Lamination (i.e. Holographic Lamination)

Please click [here](#) for useful information on the best to set up and supply your artwork. For any further questions please email our design team [here](#).

Please ask your account manager if you would like to change the stock and/or finish, prices will vary. \* Please note, not all card stocks are available on all templates. Please check with your sales contact.



**KEY**

-  Trim Line
-  Fold Line
-  3mm Safety Area - Important text and logos should not be in this area.
-  3mm Required Bleed Area - Background should extend to this line.

**AVAILABLE CARD STOCKS \***

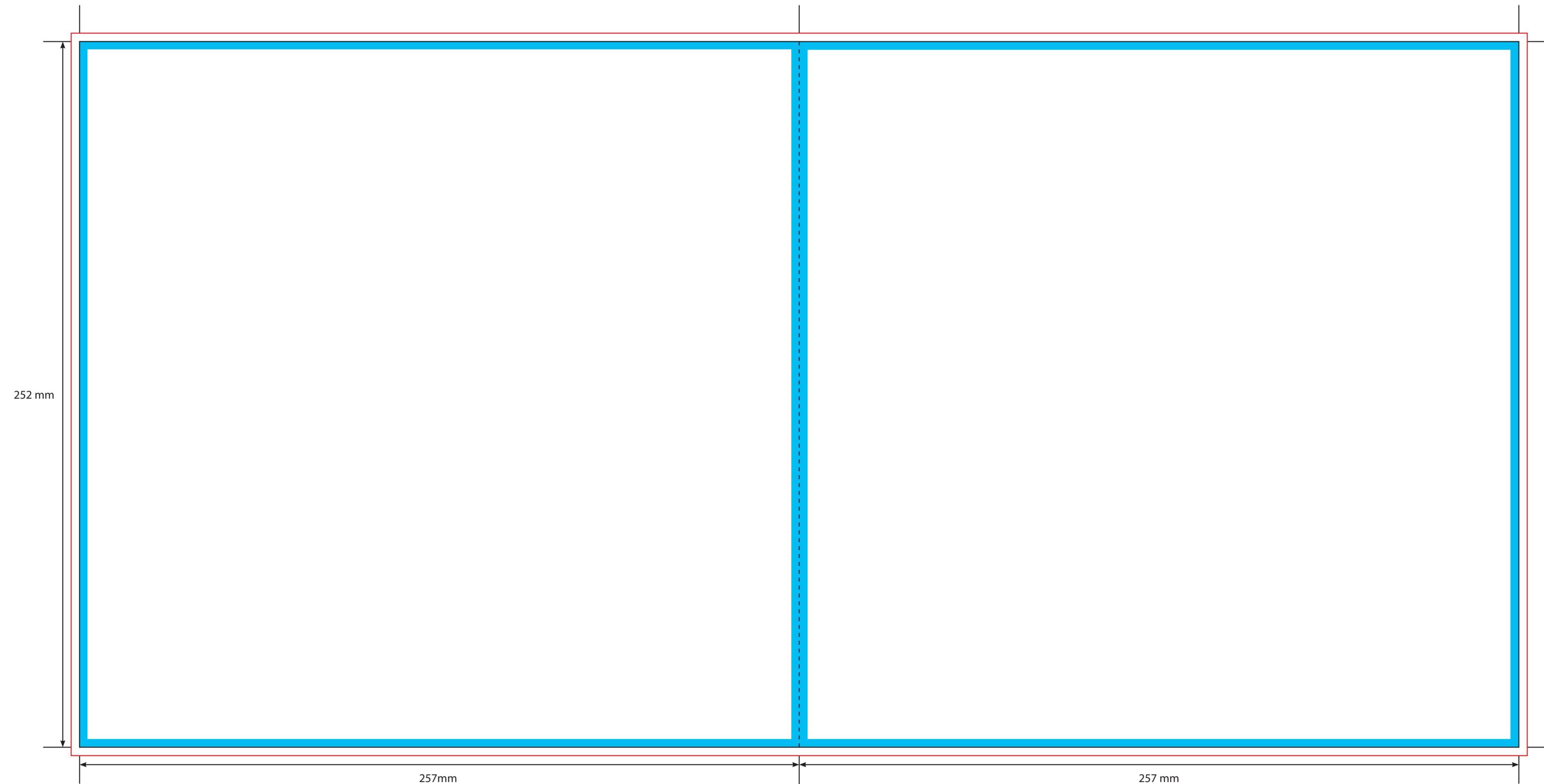
- 150gsm Gloss Art Paper
- 200gsm Gloss Art Paper
- 250gsm Gloss Art Paper
- 190gsm Offset Paper
- 350gsm White/White Card
- 300gsm White/White Card

**CARD FINISHES AVAILABLE**

- Gloss Machine Varnish
- Matt Machine Varnish
- Reverse Board (Uncoated)
- Gloss Lamination
- Matt Lamination
- Anti-Scratch Matt Lamination
- Special Lamination (i.e. Holographic Lamination)


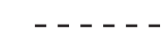


Please click [here](#) for useful information on the best to set up and supply your artwork.  
For any further questions please email our design team [here](#).

Please ask your account manager if you would like to change the stock and/or finish, prices will vary.  
\* Please note, not all card stocks are available on all templates. Please check with your sales contact.



4 - 13

**KEY**

-  Trim Line
-  Fold Line
-  3mm Safety Area - *Important text and logos should not be in this area.*
-  3mm Required Bleed Area - *Background should extend to this line.*

**AVAILABLE CARD STOCKS \***

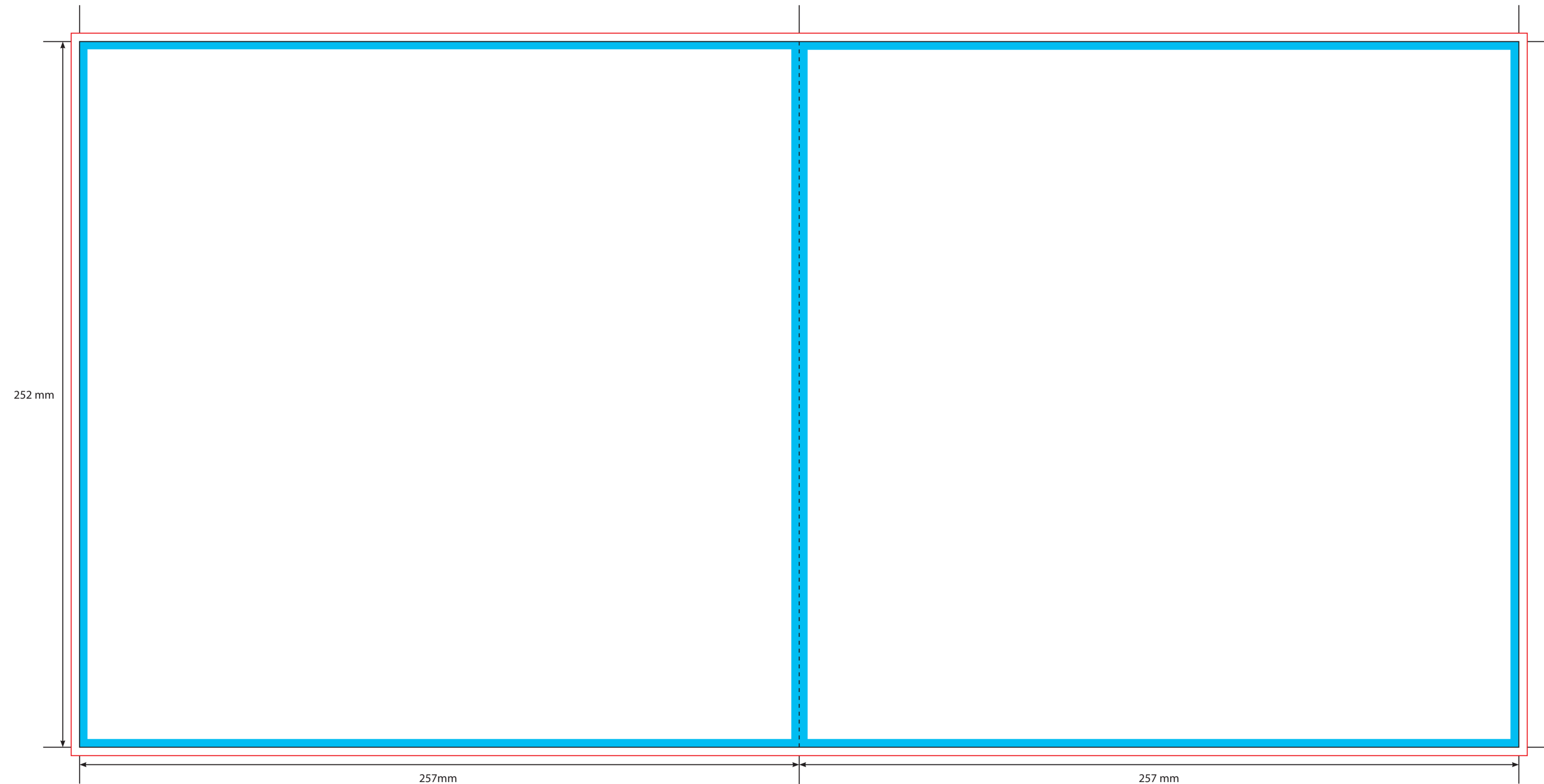
- 150gsm Gloss Art Paper
- 200gsm Gloss Art Paper
- 250gsm Gloss Art Paper
- 190gsm Offset Paper
- 350gsm White/White Card
- 300gsm White/White Card

**CARD FINISHES AVAILABLE**


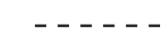


- Gloss Machine Varnish
- Matt Machine Varnish
- Reverse Board (Uncoated)
- Gloss Lamination
- Matt Lamination
- Anti-Scratch Matt Lamination
- Special Lamination (i.e. Holographic Lamination)

Please click [here](#) for useful information on the best to set up and supply your artwork.  
For any further questions please email our design team [here](#).

Please ask your account manager if you would like to change the stock and/or finish, prices will vary.  
\* Please note, not all card stocks are available on all templates. Please check with your sales contact.



**KEY**

-  Trim Line
-  Fold Line
-  3mm Safety Area - Important text and logos should not be in this area.
-  3mm Required Bleed Area - Background should extend to this line.

Please click [here](#) for useful information on the best to set up and supply your artwork.  
For any further questions please email our design team [here](#).

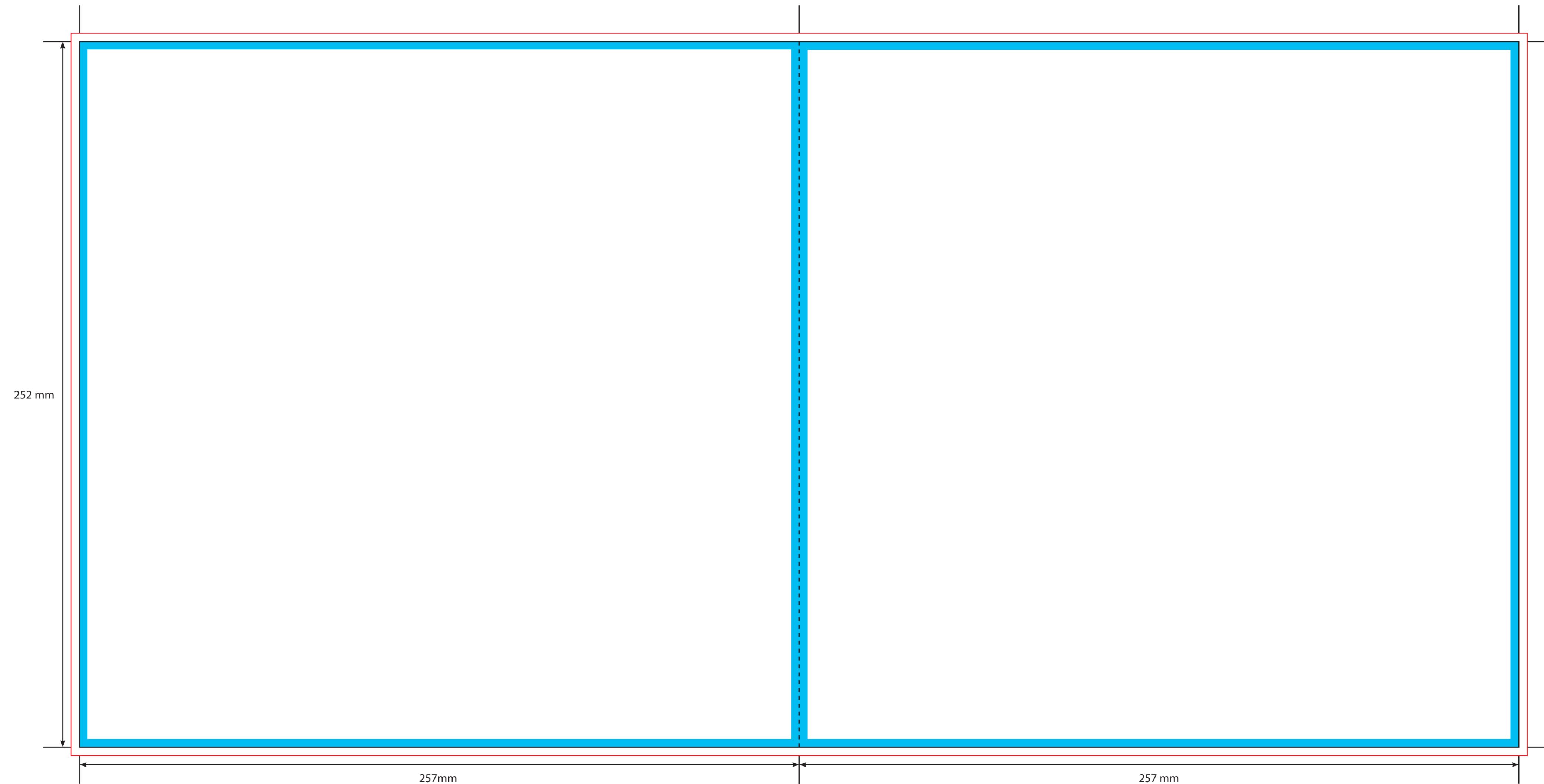
**AVAILABLE CARD STOCKS \***

- 150gsm Gloss Art Paper
- 200gsm Gloss Art Paper
- 250gsm Gloss Art Paper
- 190gsm Offset Paper
- 350gsm White/White Card
- 300gsm White/White Card

**CARD FINISHES AVAILABLE**


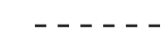


- Gloss Machine Varnish
- Matt Machine Varnish
- Reverse Board (Uncoated)
- Gloss Lamination
- Matt Lamination
- Anti-Scratch Matt Lamination
- Special Lamination (i.e. Holographic Lamination)

Please ask your account manager if you would like to change the stock and/or finish, prices will vary.  
\* Please note, not all card stocks are available on all templates. Please check with your sales contact.



6 - 11

**KEY**

-  Trim Line
-  Fold Line
-  3mm Safety Area - Important text and logos should not be in this area.
-  3mm Required Bleed Area - Background should extend to this line.

**AVAILABLE CARD STOCKS \***

- 150gsm Gloss Art Paper
- 200gsm Gloss Art Paper
- 250gsm Gloss Art Paper
- 190gsm Offset Paper
- 350gsm White/White Card
- 300gsm White/White Card

**CARD FINISHES AVAILABLE**

- Gloss Machine Varnish
- Matt Machine Varnish
- Reverse Board (Uncoated)
- Gloss Lamination
- Matt Lamination
- Anti-Scratch Matt Lamination
- Special Lamination (i.e. Holographic Lamination)

Please click [here](#) for useful information on the best to set up and supply your artwork.  
For any further questions please email our design team [here](#).

Please ask your account manager if you would like to change the stock and/or finish, prices will vary.  
\* Please note, not all card stocks are available on all templates. Please check with your sales contact.



**KEY**

- Trim Line
- - - - - Fold Line
- 3mm Safety Area - Important text and logos should not be in this area.
- 3mm Required Bleed Area - Background should extend to this line.

**AVAILABLE CARD STOCKS \***

- 150gsm Gloss Art Paper
- 200gsm Gloss Art Paper
- 250gsm Gloss Art Paper
- 190gsm Offset Paper
- 350gsm White/White Card
- 300gsm White/White Card

**CARD FINISHES AVAILABLE**

- Gloss Machine Varnish
- Matt Machine Varnish
- Reverse Board (Uncoated)
- Gloss Lamination
- Matt Lamination
- Anti-Scratch Matt Lamination
- Special Lamination (i.e. Holographic Lamination)

Please click [here](#) for useful information on the best to set up and supply your artwork. For any further questions please email our design team [here](#).

Please ask your account manager if you would like to change the stock and/or finish, prices will vary. \* Please note, not all card stocks are available on all templates. Please check with your sales contact.



8 - 9

**KEY**

- Trim Line
- - - - - Fold Line
- 3mm Safety Area - Important text and logos should not be in this area.
- 3mm Required Bleed Area - Background should extend to this line.

**AVAILABLE CARD STOCKS \***

- 150gsm Gloss Art Paper
- 200gsm Gloss Art Paper
- 250gsm Gloss Art Paper
- 190gsm Offset Paper
- 350gsm White/White Card
- 300gsm White/White Card

**CARD FINISHES AVAILABLE**

- Gloss Machine Varnish
- Matt Machine Varnish
- Reverse Board (Uncoated)
- Gloss Lamination
- Matt Lamination
- Anti-Scratch Matt Lamination
- Special Lamination (i.e. Holographic Lamination)

Please click [here](#) for useful information on the best to set up and supply your artwork. For any further questions please email our design team [here](#).

Please ask your account manager if you would like to change the stock and/or finish, prices will vary. \* Please note, not all card stocks are available on all templates. Please check with your sales contact.