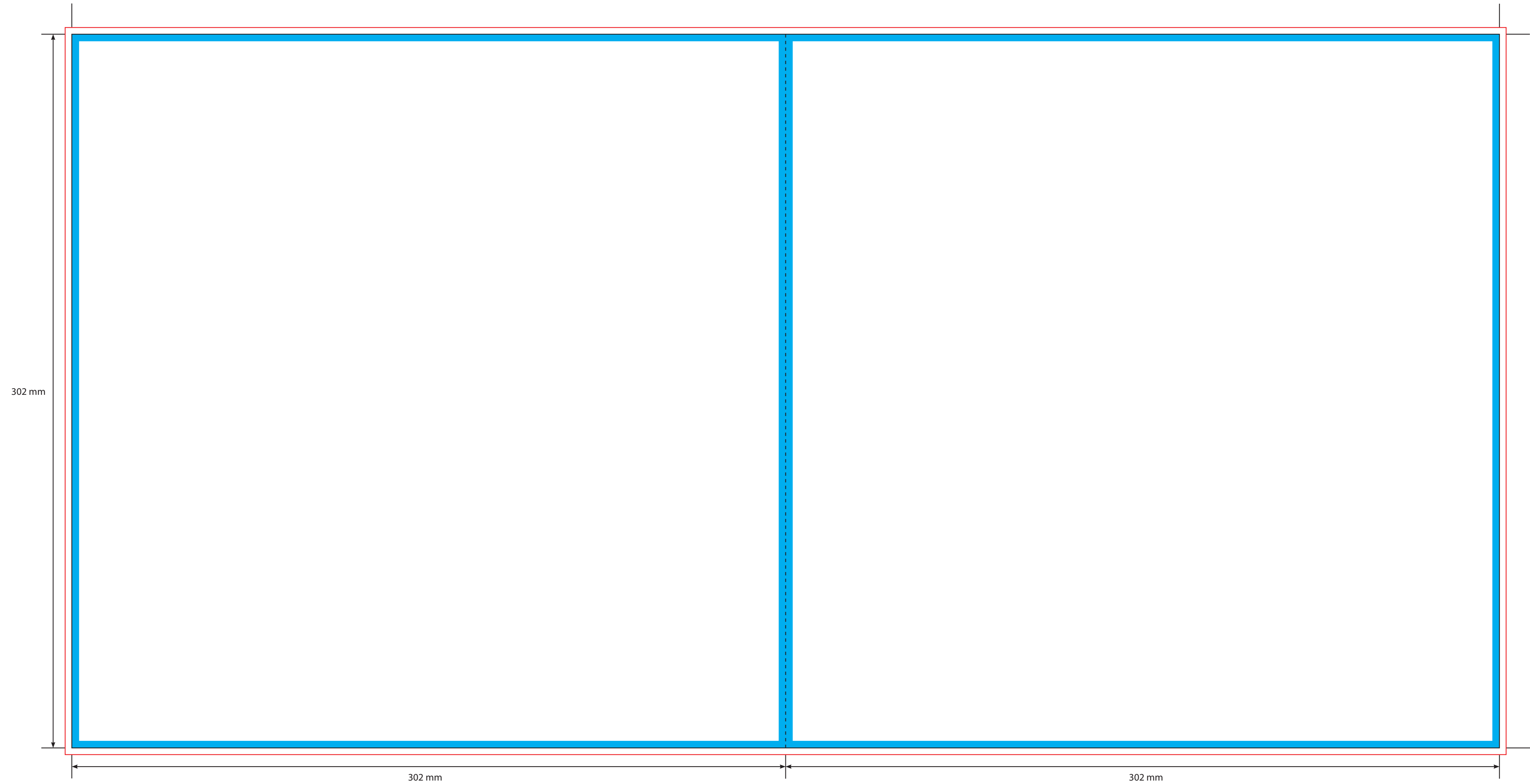

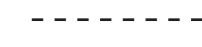




OUTER



KEY

-  Trim Line
-  Fold Line
-  3mm Safety Area - Important text and logos should not be in this area.
-  3mm Required Bleed Area - Background should extend to this line.

AVAILABLE PAPER/CARD STOCKS \*

- |                        |                         |
|------------------------|-------------------------|
| 150gsm Gloss Art Paper | 190gsm Offset Paper     |
| 200gsm Gloss Art Paper | 350gsm White/White Card |
| 250gsm Gloss Art Paper | 300gsm White/White Card |

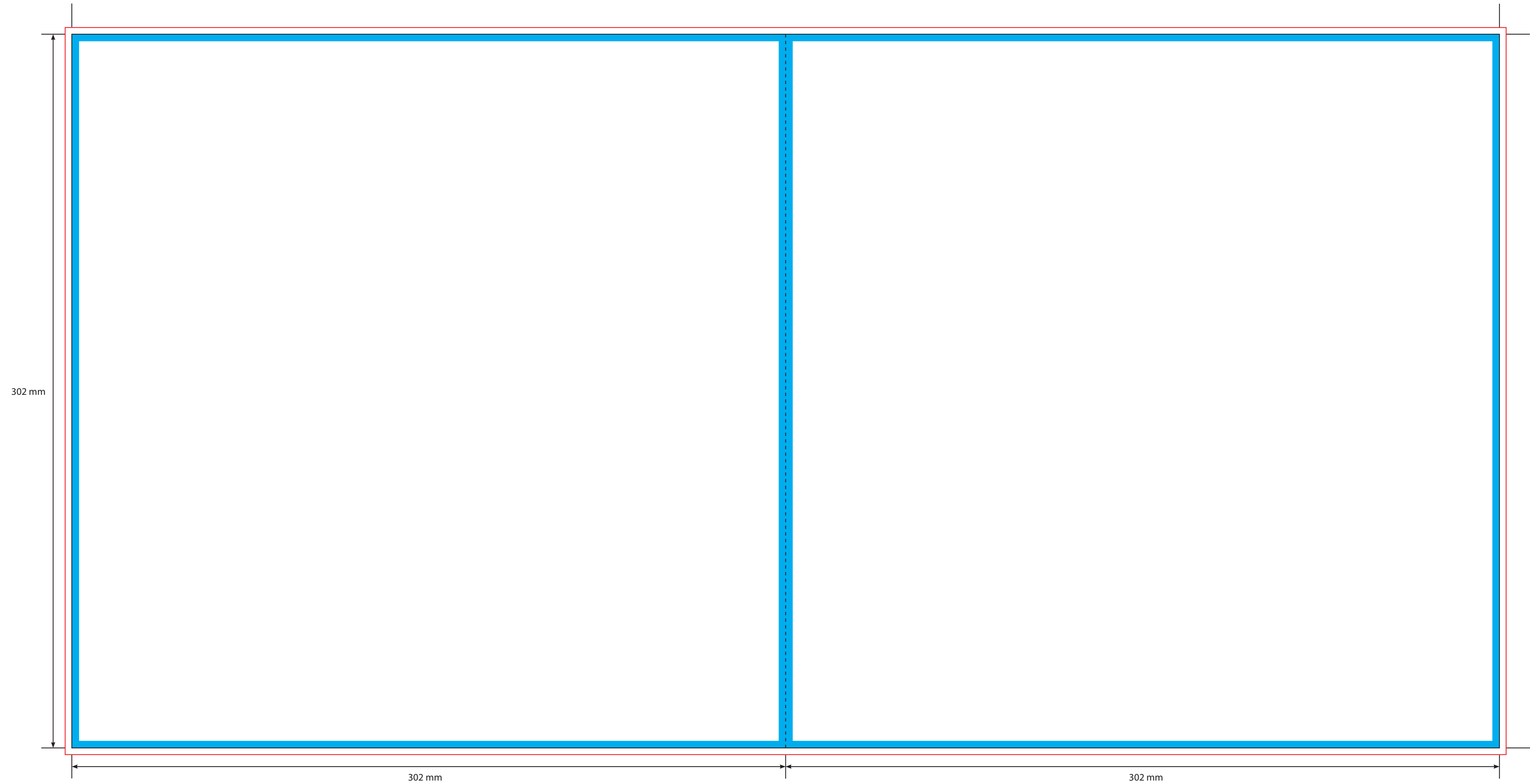
CARD FINISHES AVAILABLE

- Gloss Machine Varnish
- Matt Machine Varnish
- Reverse Board (Uncoated)
- Gloss Lamination
- Matt Lamination

Please click [here](#) for useful information on the best way to set up and supply your artwork.  
For any further questions please email our design team [here](#).

Please ask your account manager if you would like to change the stock and/or finish, prices will vary.  
\* Please note, not all card stocks are available on all templates. Please check with your sales contact.

INNER



**KEY**  
— Trim Line  
- - - - - Fold Line  
3mm Safety Area - Important text and logos should not be in this area.  
3mm Required Bleed Area - Background should extend to this line.

**AVAILABLE PAPER/CARD STOCKS \***  
150gsm Gloss Art Paper  
200gsm Gloss Art Paper  
250gsm Gloss Art Paper  
190gsm Offset Paper  
350gsm White/White Card  
300gsm White/White Card

**CARD FINISHES AVAILABLE**  
Gloss Machine Varnish  
Matt Machine Varnish  
Reverse Board (Uncoated)  
Gloss Lamination  
Matt Lamination

Please click [here](#) for useful information on the best way to set up and supply your artwork.  
For any further questions please email our design team [here](#).

Please ask your account manager if you would like to change the stock and/or finish, prices will vary.  
\* Please note, not all card stocks are available on all templates. Please check with your sales contact.