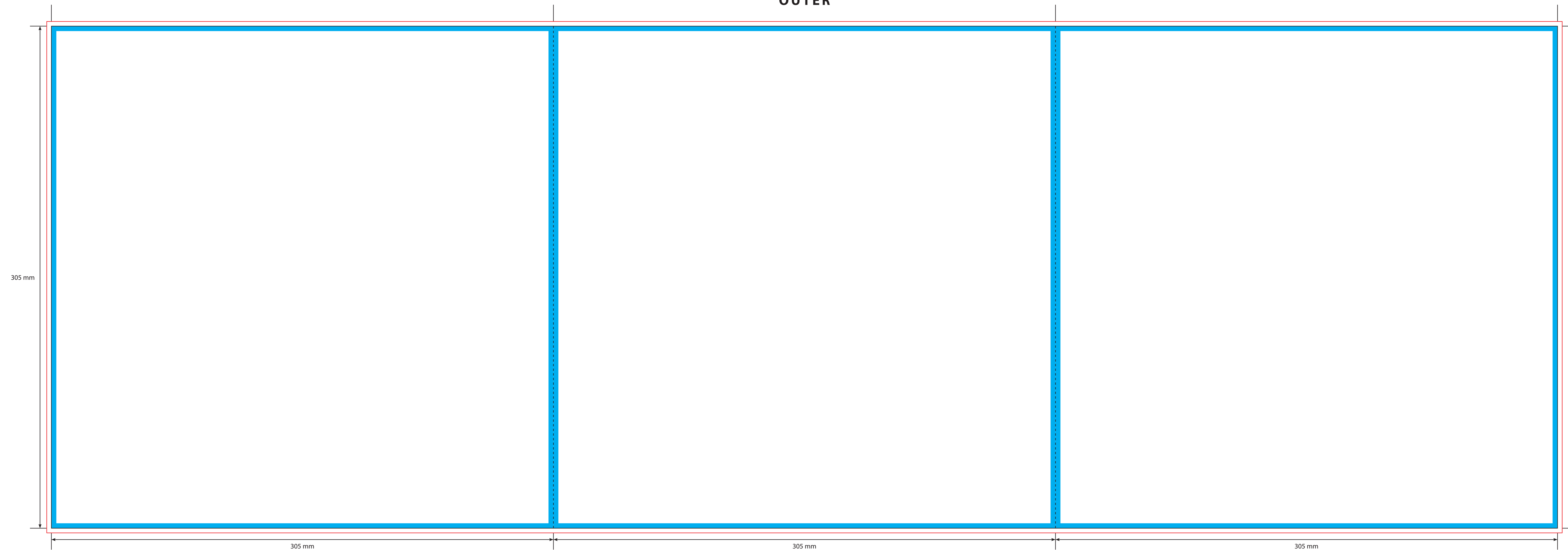




OUTER



- KEY**
- Trim Line
  - - - - - Fold Line
  - 3mm Safety Area - Important text and logos should not be in this area.
  - 3mm Required Bleed Area - Background should extend to this line.

- AVAILABLE PAPER/CARD STOCKS \***
- |                        |                         |
|------------------------|-------------------------|
| 150gsm Gloss Art Paper | 190gsm Offset Paper     |
| 200gsm Gloss Art Paper | 350gsm White/White Card |
| 250gsm Gloss Art Paper | 300gsm White/White Card |

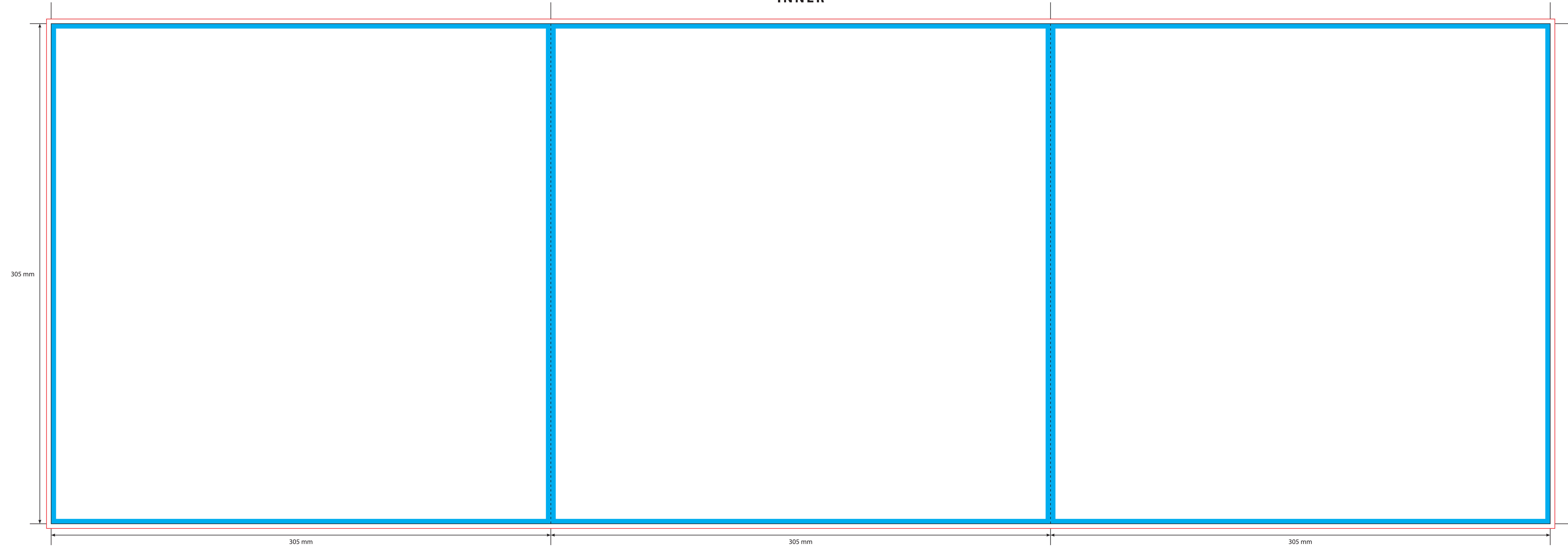
- CARD FINISHES AVAILABLE**
- Gloss Machine Varnish
  - Matt Machine Varnish
  - Reverse Board (Uncoated)
  - Gloss Lamination
  - Matt Lamination

Please click [here](#) for useful information on the best way to set up and supply your artwork.  
 For any further questions please email our design team [here](#).

Please ask your account manager if you would like to change the stock and/or finish, prices will vary.  
 \* Please note, not all card stocks are available on all templates. Please check with your sales contact.



INNER



- KEY**
- Trim Line
  - - - - - Fold Line
  - 3mm Safety Area - Important text and logos should not be in this area.
  - 3mm Required Bleed Area - Background should extend to this line.

- AVAILABLE PAPER/CARD STOCKS \***
- |                        |                         |
|------------------------|-------------------------|
| 150gsm Gloss Art Paper | 190gsm Offset Paper     |
| 200gsm Gloss Art Paper | 350gsm White/White Card |
| 250gsm Gloss Art Paper | 300gsm White/White Card |

- CARD FINISHES AVAILABLE**
- Gloss Machine Varnish
  - Matt Machine Varnish
  - Reverse Board (Uncoated)
  - Gloss Lamination
  - Matt Lamination

Please click [here](#) for useful information on the best way to set up and supply your artwork.  
 For any further questions please email our design team [here](#).

Please ask your account manager if you would like to change the stock and/or finish, prices will vary.  
 \* Please note, not all card stocks are available on all templates. Please check with your sales contact.