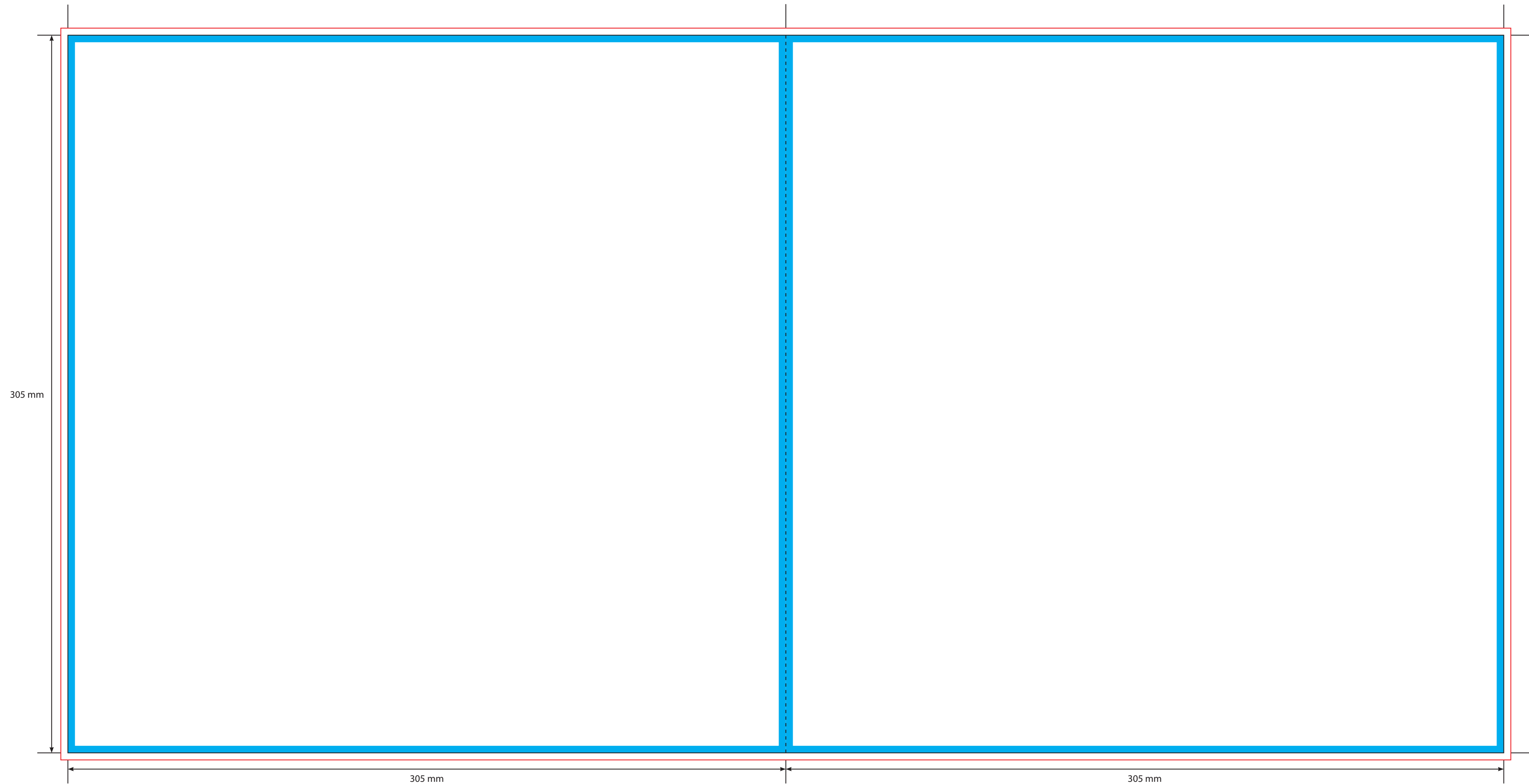






Page 8

Page 1



KEY

-  Trim Line
-  Fold Line
-  3mm Safety Area - Important text and logos should not be in this area.
-  3mm Required Bleed Area - Background should extend to this line.

AVAILABLE CARD STOCKS *

- 300gsm White/White > Standard
- 300gsm White/Brown
- 280gsm White/Grey
- 350gsm White/White
- 425gsm White/Brown

CARD FINISHES AVAILABLE

- Gloss Machine Varnish > Standard
- Matt Machine Varnish
- Reverse Board (Uncoated)
- Gloss Lamination
- Matt Lamination

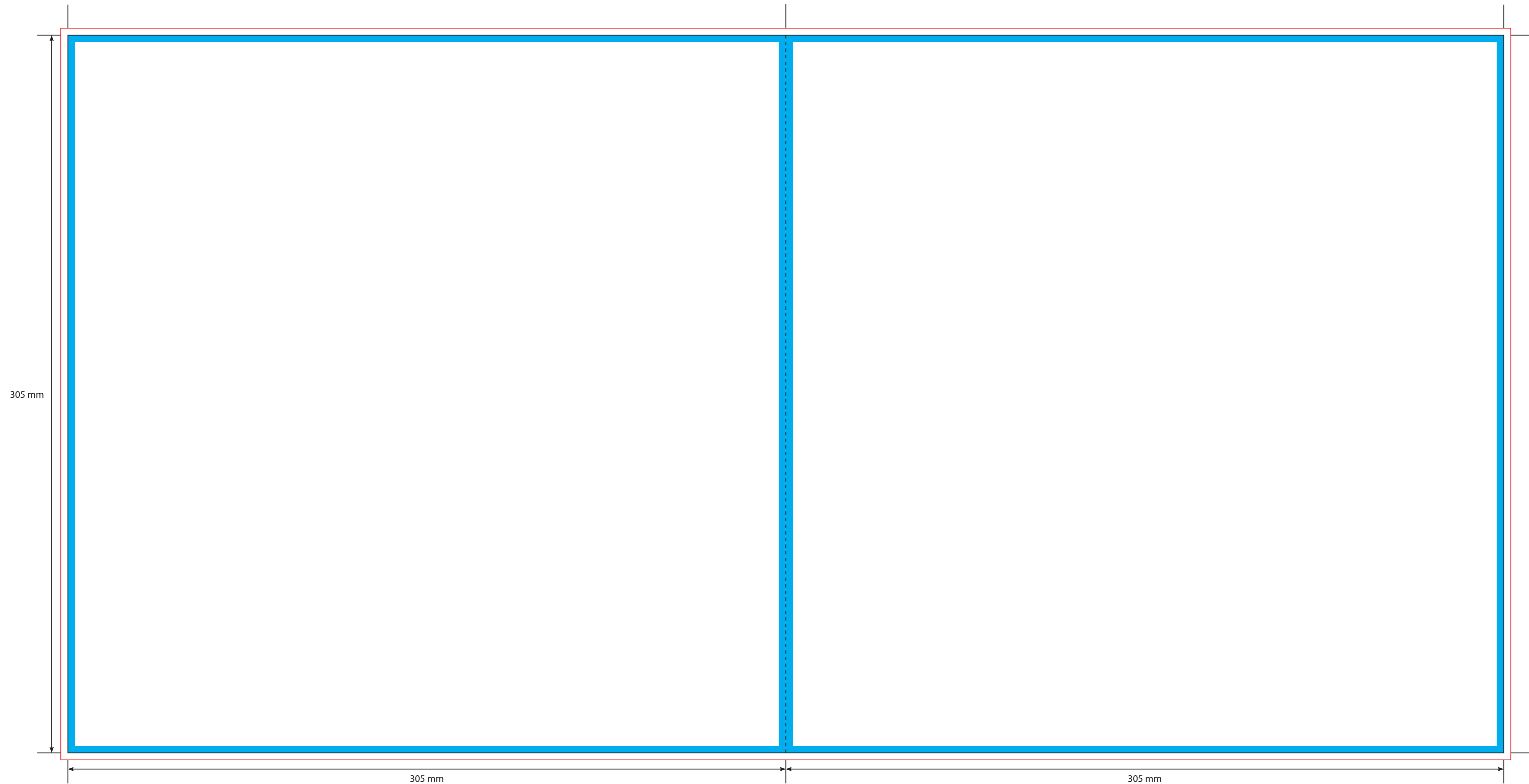
- Anti-Scratch Matt Lamination
- Special Lamination
- (i.e. Holographic Lamination)

Please click [here](#) for useful information on the best way to set up and supply your artwork.
For any further questions please email our design team [here](#).





Please ask your account manager if you would like to change the stock and/or finish, prices will vary.
* Please note, not all card stocks are available on all templates. Please check with your sales contact.

Page 2

Page 7



KEY

-  Trim Line
-  Fold Line
-  3mm Safety Area - Important text and logos should not be in this area.
-  3mm Required Bleed Area - Background should extend to this line.

AVAILABLE CARD STOCKS *

- 300gsm White/White > Standard
- 300gsm White/Brown
- 280gsm White/Grey
- 350gsm White/White
- 425gsm White/Brown

CARD FINISHES AVAILABLE

- Gloss Machine Varnish > Standard
- Matt Machine Varnish
- Reverse Board (Uncoated)
- Gloss Lamination
- Matt Lamination

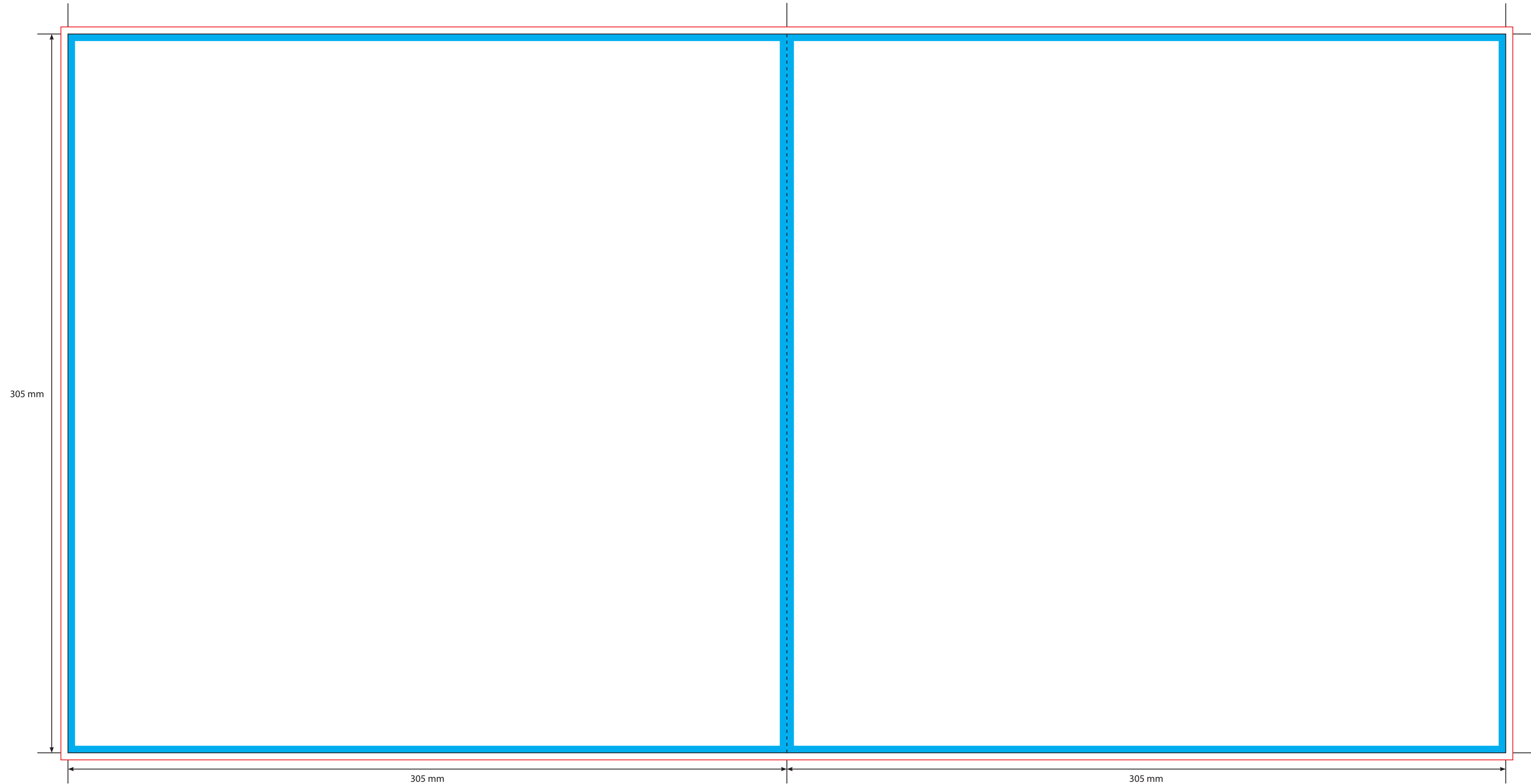
- Anti-Scratch Matt Lamination
- Special Lamination
- (i.e. Holographic Lamination)

Please click [here](#) for useful information on the best way to set up and supply your artwork.
For any further questions please email our design team [here](#).




Please ask your account manager if you would like to change the stock and/or finish, prices will vary.
* Please note, not all card stocks are available on all templates. Please check with your sales contact.

Page 6

Page 3



KEY

-  Trim Line
-  Fold Line
-  3mm Safety Area - Important text and logos should not be in this area.
-  3mm Required Bleed Area - Background should extend to this line.

AVAILABLE CARD STOCKS *

- 300gsm White/White > Standard
- 300gsm White/Brown
- 280gsm White/Grey
- 350gsm White/White
- 425gsm White/Brown

CARD FINISHES AVAILABLE

- Gloss Machine Varnish > Standard
- Matt Machine Varnish
- Reverse Board (Uncoated)
- Gloss Lamination
- Matt Lamination

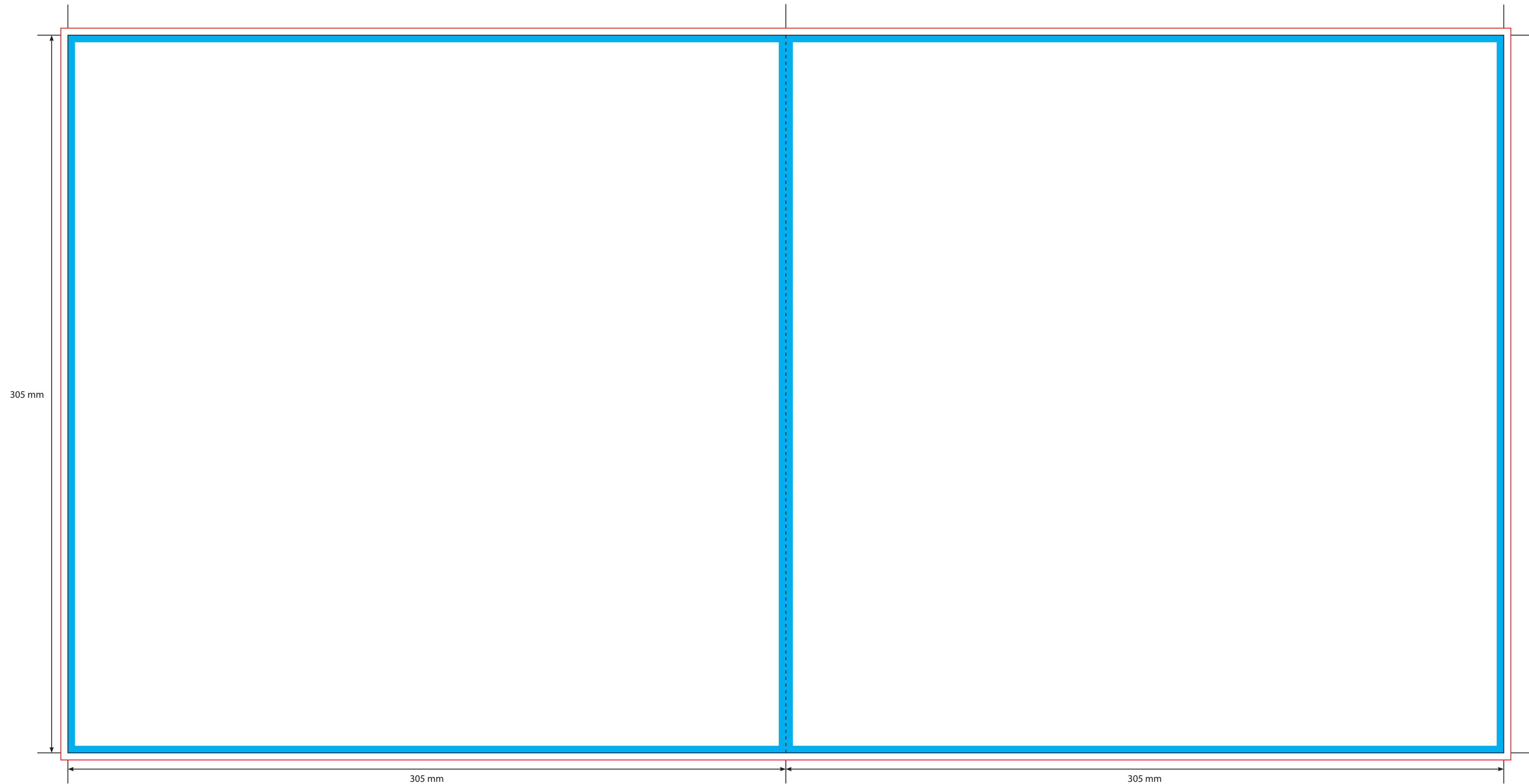
- Anti-Scratch Matt Lamination
- Special Lamination
- (i.e. Holographic Lamination)

Please click [here](#) for useful information on the best way to set up and supply your artwork.
For any further questions please email our design team [here](#).





Please ask your account manager if you would like to change the stock and/or finish, prices will vary.
* Please note, not all card stocks are available on all templates. Please check with your sales contact.

Page 4

Page 5



KEY

-  Trim Line
-  Fold Line
-  3mm Safety Area - Important text and logos should not be in this area.
-  3mm Required Bleed Area - Background should extend to this line.

AVAILABLE CARD STOCKS *

- 300gsm White/White > Standard
- 300gsm White/Brown
- 280gsm White/Grey
- 350gsm White/White
- 425gsm White/Brown

CARD FINISHES AVAILABLE

- Gloss Machine Varnish > Standard
- Matt Machine Varnish
- Reverse Board (Uncoated)
- Gloss Lamination
- Matt Lamination

- Anti-Scratch Matt Lamination
- Special Lamination
- (i.e. Holographic Lamination)

Please click [here](#) for useful information on the best way to set up and supply your artwork.
For any further questions please email our design team [here](#).

Please ask your account manager if you would like to change the stock and/or finish, prices will vary.
* Please note, not all card stocks are available on all templates. Please check with your sales contact.