
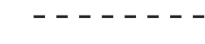




KEY

-  Trim Line
-  Fold Line
-  3mm Safety Area - Important text and logos should not be in this area.
-  3mm Required Bleed Area - Background should extend to this line.

Please click [here](#) for useful information on the best way to set up and supply your artwork.
For any further questions please email our design team [here](#).

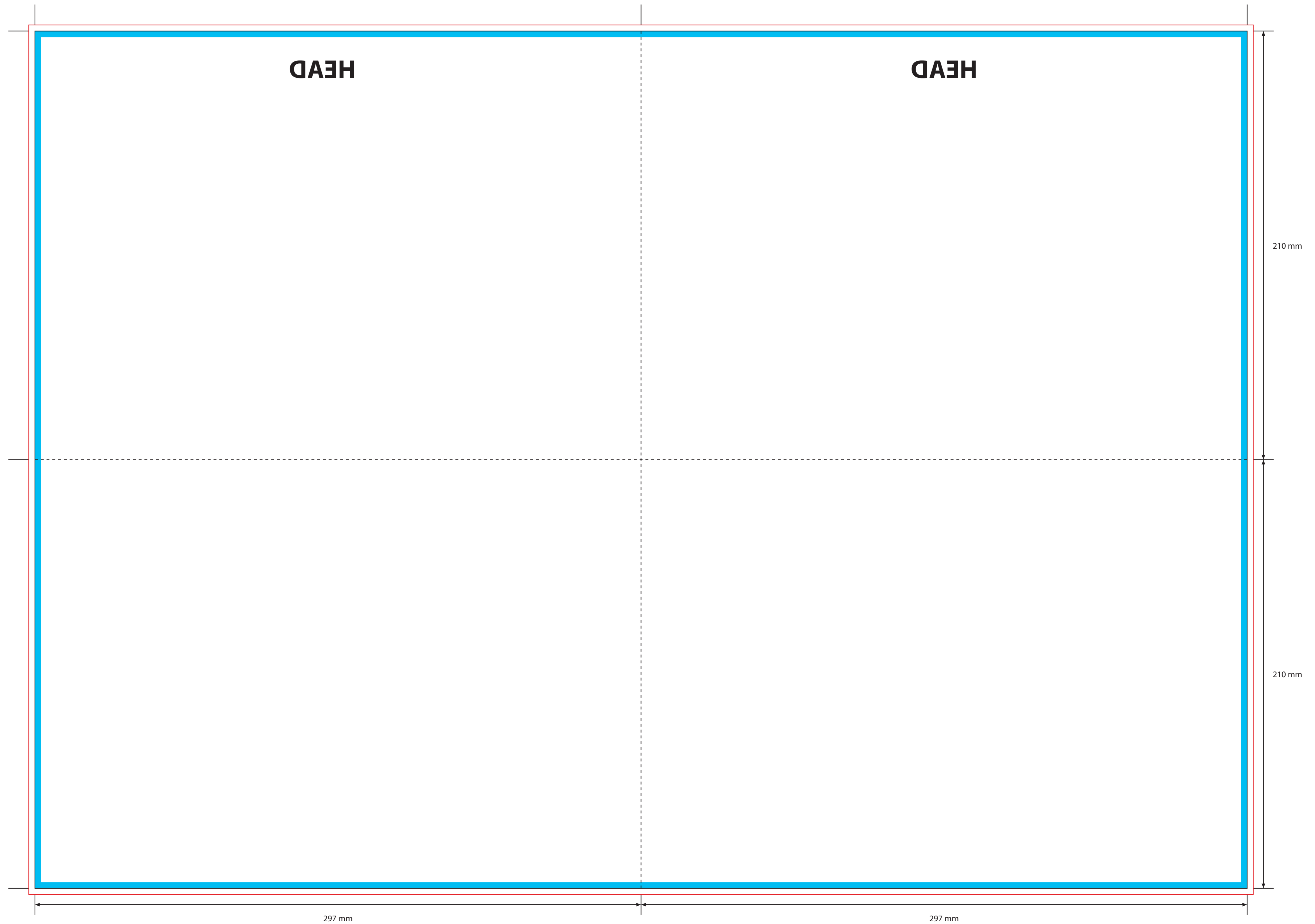
AVAILABLE PAPER/CARD STOCKS *

- | | |
|------------------------|-------------------------|
| 150gsm Gloss Art Paper | 190gsm Offset Paper |
| 200gsm Gloss Art Paper | 350gsm White/White Card |
| 250gsm Gloss Art Paper | 300gsm White/White Card |

CARD FINISHES AVAILABLE

- Gloss Machine Varnish
- Matt Machine Varnish
- Reverse Board (Uncoated)
- Gloss Lamination
- Matt Lamination

Please ask your account manager if you would like to change the stock and/or finish, prices will vary.
* Please note, not all card stocks are available on all templates. Please check with your sales contact.



KEY

- Trim Line
- - - - - Fold Line
- 3mm Safety Area - Important text and logos should not be in this area.
- 3mm Required Bleed Area - Background should extend to this line.

Please click [here](#) for useful information on the best way to set up and supply your artwork.
For any further questions please email our design team [here](#).

AVAILABLE PAPER/CARD STOCKS *

- | | |
|------------------------|-------------------------|
| 150gsm Gloss Art Paper | 190gsm Offset Paper |
| 200gsm Gloss Art Paper | 350gsm White/White Card |
| 250gsm Gloss Art Paper | 300gsm White/White Card |

CARD FINISHES AVAILABLE

- Gloss Machine Varnish
- Matt Machine Varnish
- Reverse Board (Uncoated)
- Gloss Lamination
- Matt Lamination

Please ask your account manager if you would like to change the stock and/or finish, prices will vary.
* Please note, not all card stocks are available on all templates. Please check with your sales contact.