





**KEY**

-  Trim Line
-  Fold Line
-  3mm Safety Area - Important text and logos should not be in this area.
-  3mm Required Bleed Area - Background should extend to this line.

**PAGINATION GUIDE**

36-1	10-27
2-35	26-11
34-3	12-25
4-33	24-13
32-5	14-23
6-31	22-15
50-7	16-21
8-29	20-17
28-9	18-19

**AVAILABLE PAPER STOCKS \***

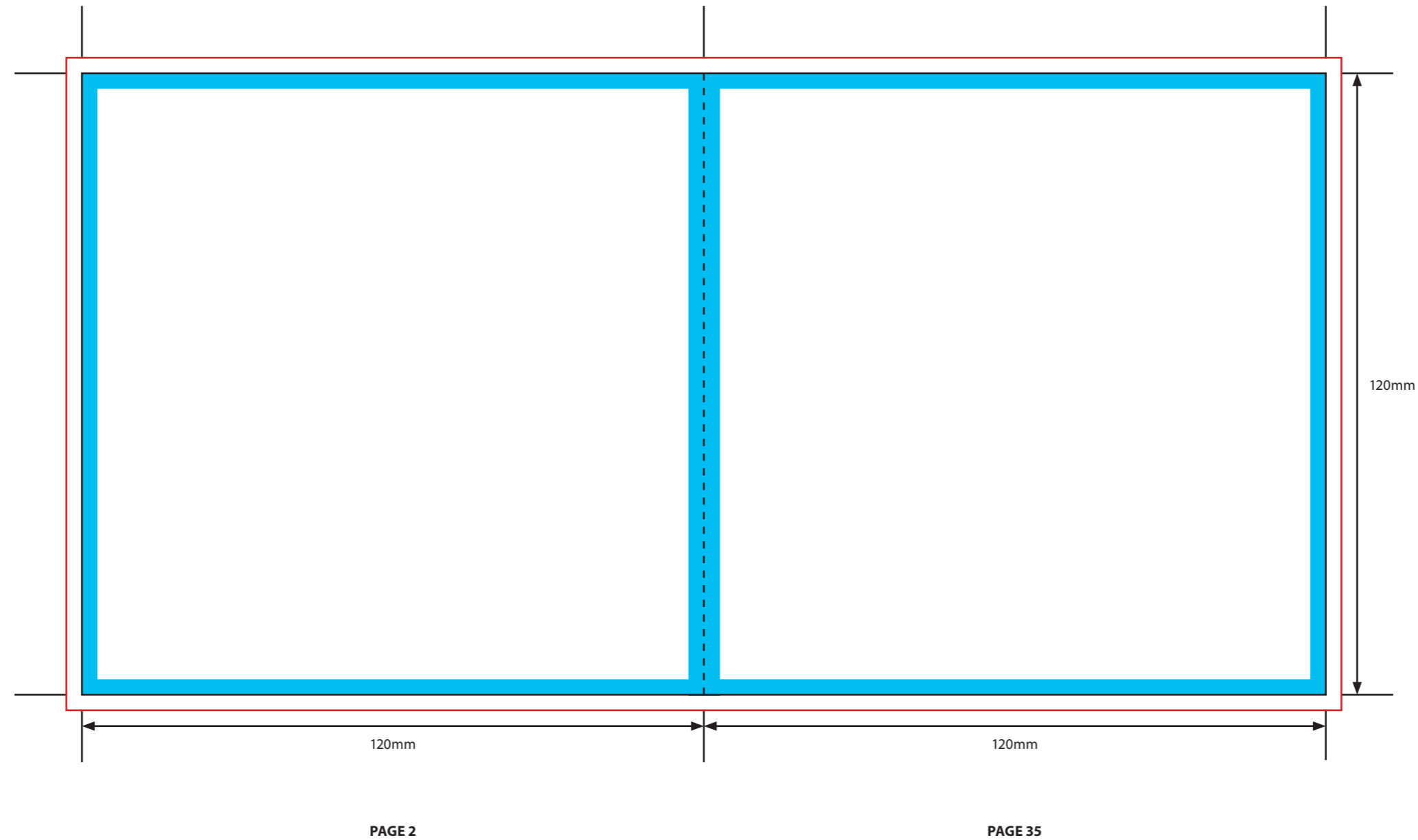
- 130gsm Gloss Art Paper > Standard
- 140gsm Offset Uncoated Paper
- Heavier weights available, please ask

**PAPER FINISHES AVAILABLE**





- Gloss Machine Varnish > Standard
- Matt Machine Varnish
- Offset (Uncoated)
- Gloss UV
- Matt Lamination

Please click [here](#) for useful information on the best way to set up and supply your artwork.  
For any further questions please email our design team [here](#).

Please ask your account manager if you would like to change the stock and/or finish, as prices may vary.  
\* Please note, not all card stocks are available on all templates. Please check with your account manager.



**KEY**

-  Trim Line
-  Fold Line
-  3mm Safety Area - *Important text and logos should not be in this area.*
-  3mm Required Bleed Area - *Background should extend to this line.*

**PAGINATION GUIDE**

36-1	10-27
2-35	26-11
34-3	12-25
4-33	24-13
32-5	14-23
6-31	22-15
50-7	16-21
8-29	20-17
28-9	18-19

**AVAILABLE PAPER STOCKS \***

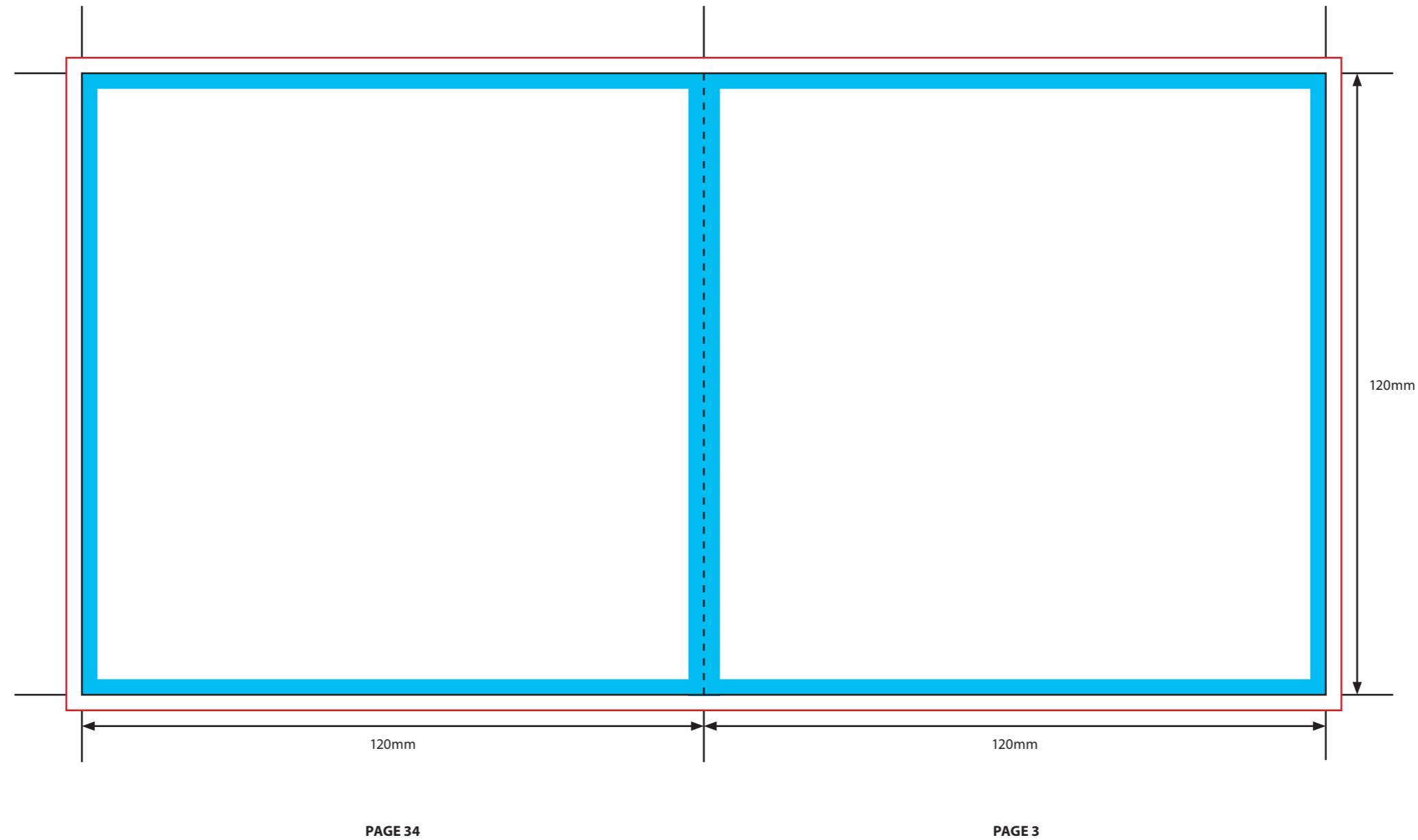
- 130gsm Gloss Art Paper > *Standard*
- 140gsm Offset Uncoated Paper
- Heavier weights available, please ask

**PAPER FINISHES AVAILABLE**





- Gloss Machine Varnish > *Standard*
- Matt Machine Varnish
- Offset (Uncoated)
- Gloss UV
- Matt Lamination

Please click [here](#) for useful information on the best way to set up and supply your artwork.  
For any further questions please email our design team [here](#).

Please ask your account manager if you would like to change the stock and/or finish, as prices may vary.  
\* Please note, not all card stocks are available on all templates. Please check with your account manager.



**KEY**

-  Trim Line
-  Fold Line
-  3mm Safety Area - *Important text and logos should not be in this area.*
-  3mm Required Bleed Area - *Background should extend to this line.*

**PAGINATION GUIDE**

36-1	10-27
2-35	26-11
34-3	12-25
4-33	24-13
32-5	14-23
6-31	22-15
50-7	16-21
8-29	20-17
28-9	18-19

**AVAILABLE PAPER STOCKS \***

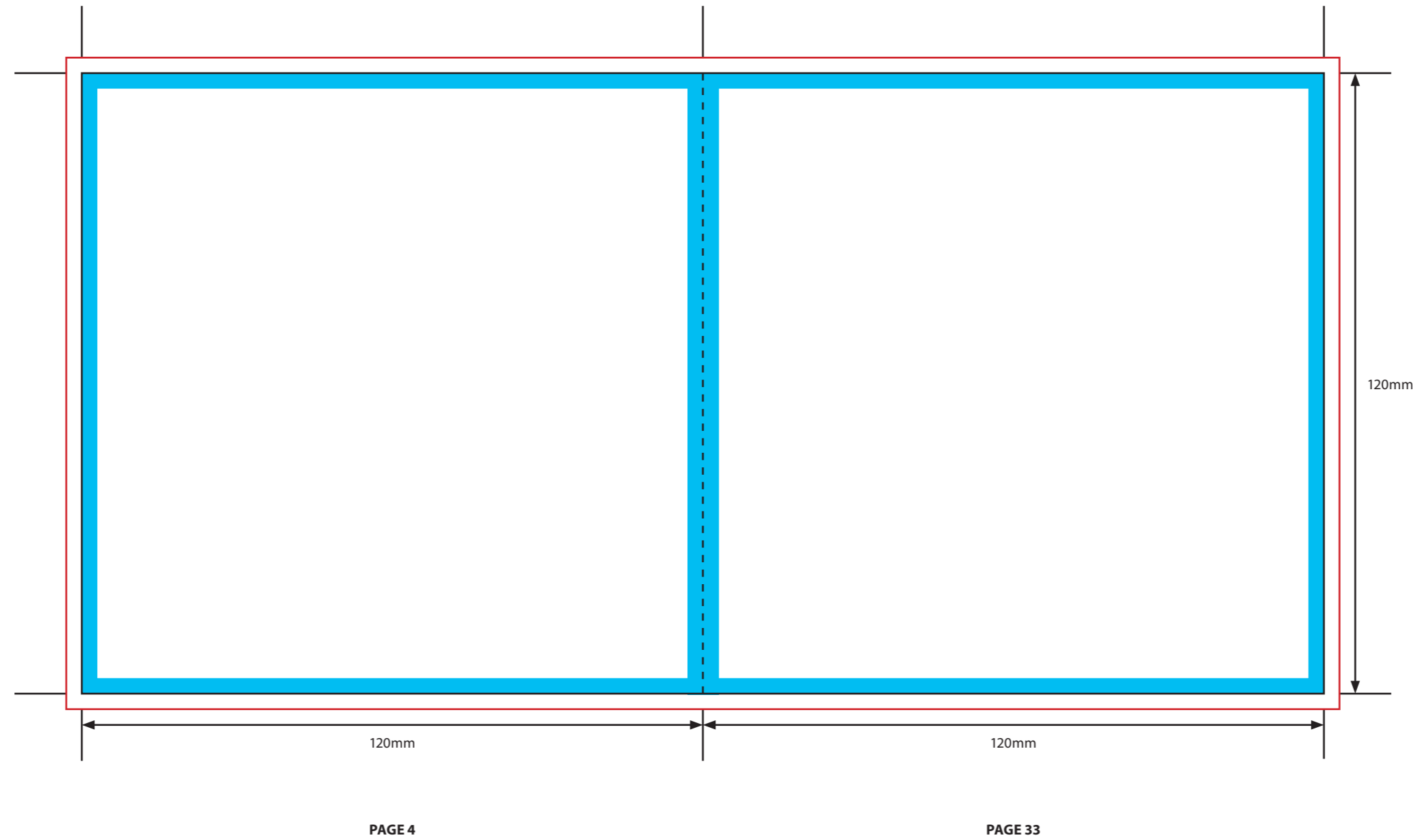
- 130gsm Gloss Art Paper > *Standard*
- 140gsm Offset Uncoated Paper
- Heavier weights available, please ask

**PAPER FINISHES AVAILABLE**

- Gloss Machine Varnish > *Standard*
- Matt Machine Varnish
- Offset (Uncoated)
- Gloss UV
- Matt Lamination

Please click [here](#) for useful information on the best way to set up and supply your artwork.  
For any further questions please email our design team [here](#).

Please ask your account manager if you would like to change the stock and/or finish, as prices may vary.  
\* Please note, not all card stocks are available on all templates. Please check with your account manager.



**KEY**

- Trim Line
- Fold Line
- 3mm Safety Area - Important text and logos should not be in this area.
- 3mm Required Bleed Area - Background should extend to this line.

**PAGINATION GUIDE**

36-1	10-27
2-35	26-11
34-3	12-25
4-33	24-13
32-5	14-23
6-31	22-15
50-7	16-21
8-29	20-17
28-9	18-19

**AVAILABLE PAPER STOCKS \***

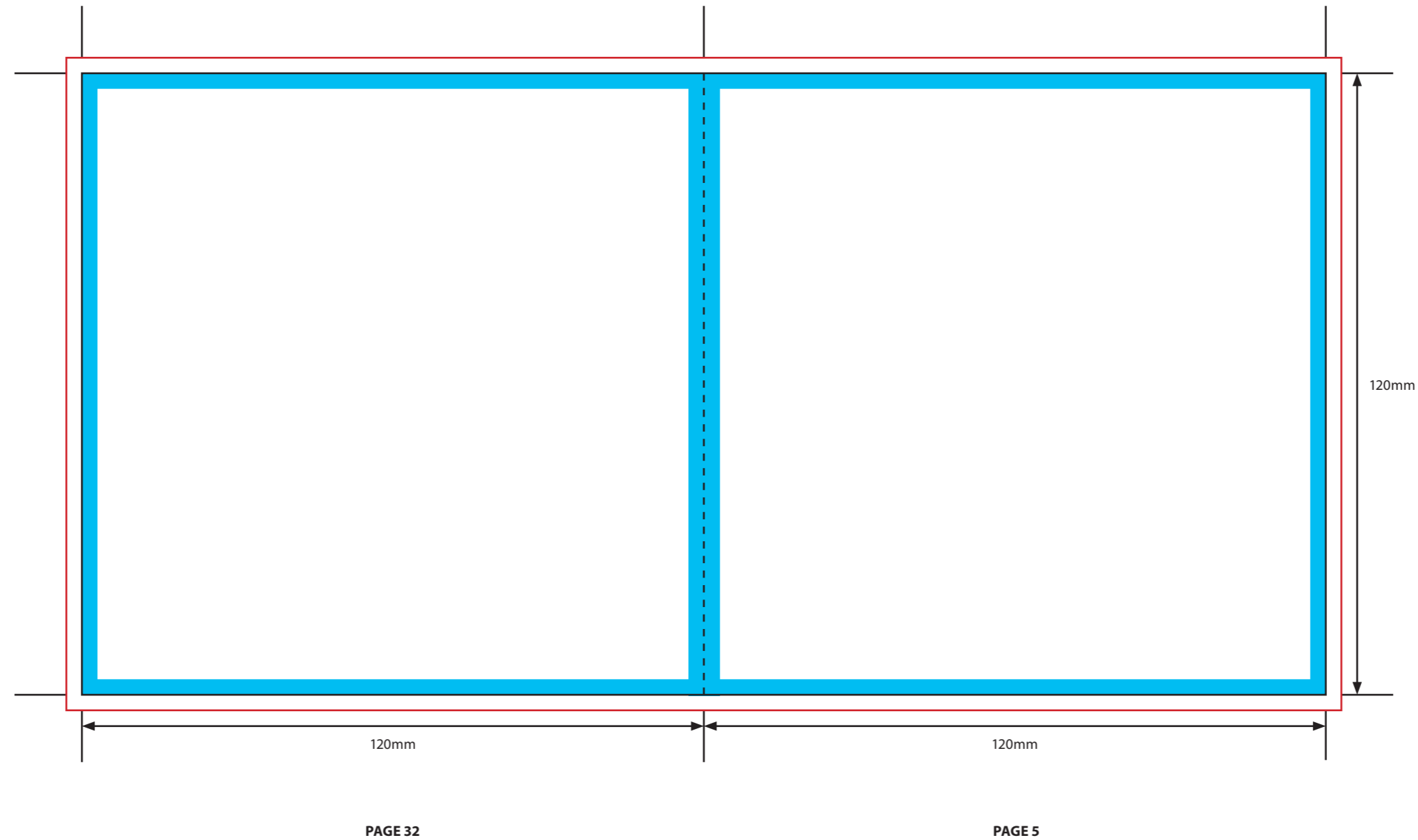
- 130gsm Gloss Art Paper > Standard
- 140gsm Offset Uncoated Paper
- Heavier weights available, please ask

**PAPER FINISHES AVAILABLE**





- Gloss Machine Varnish > Standard
- Matt Machine Varnish
- Offset (Uncoated)
- Gloss UV
- Matt Lamination

Please click [here](#) for useful information on the best way to set up and supply your artwork.  
 For any further questions please email our design team [here](#).

Please ask your account manager if you would like to change the stock and/or finish, as prices may vary.  
 \* Please note, not all card stocks are available on all templates. Please check with your account manager.



**KEY**

-  Trim Line
-  Fold Line
-  3mm Safety Area - Important text and logos should not be in this area.
-  3mm Required Bleed Area - Background should extend to this line.

**PAGINATION GUIDE**

36-1	10-27
2-35	26-11
34-3	12-25
4-33	24-13
32-5	14-23
6-31	22-15
50-7	16-21
8-29	20-17
28-9	18-19

**AVAILABLE PAPER STOCKS \***

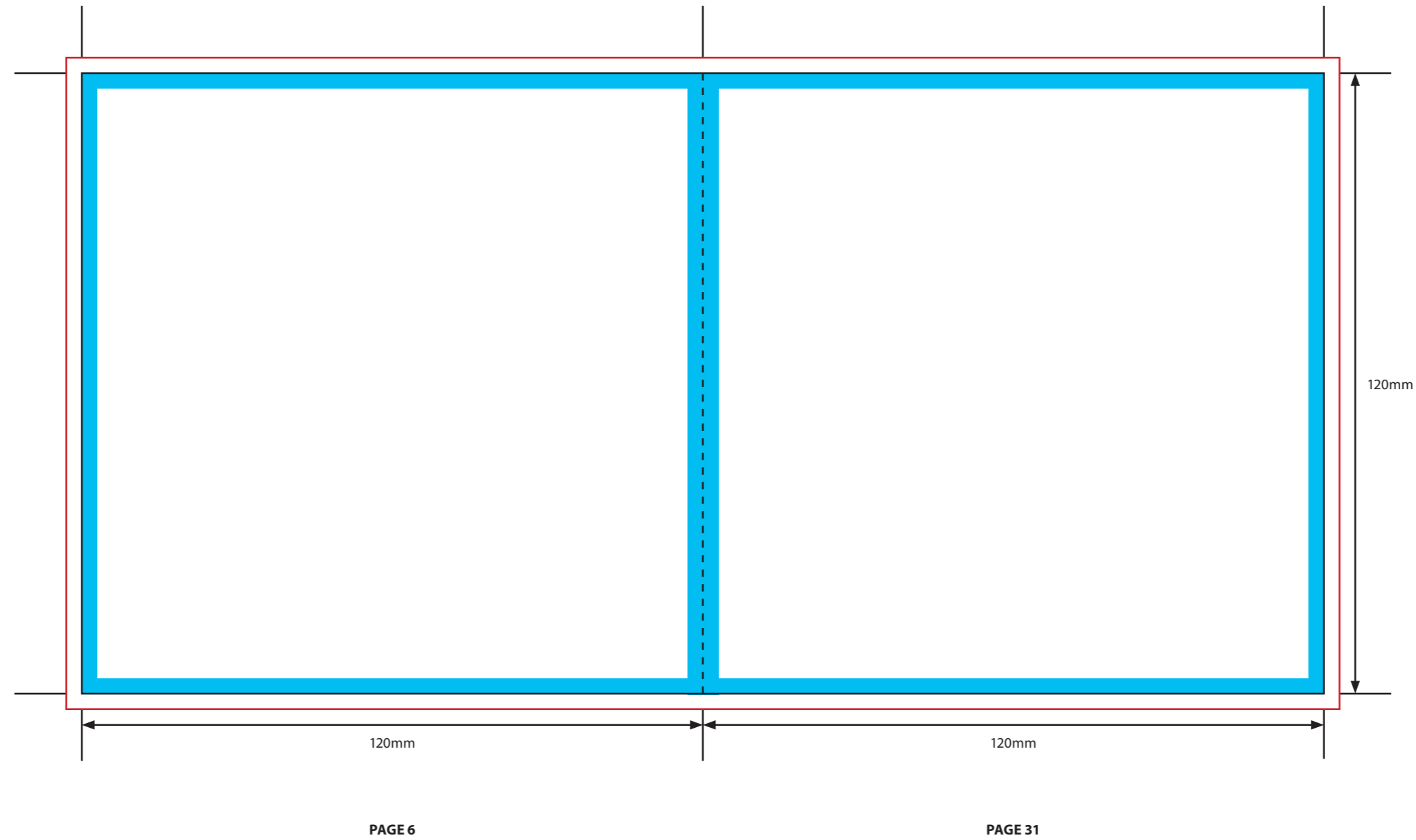
- 130gsm Gloss Art Paper > Standard
- 140gsm Offset Uncoated Paper
- Heavier weights available, please ask

**PAPER FINISHES AVAILABLE**





- Gloss Machine Varnish > Standard
- Matt Machine Varnish
- Offset (Uncoated)
- Gloss UV
- Matt Lamination

Please click [here](#) for useful information on the best way to set up and supply your artwork.  
For any further questions please email our design team [here](#).

Please ask your account manager if you would like to change the stock and/or finish, as prices may vary.  
\* Please note, not all card stocks are available on all templates. Please check with your account manager.



**KEY**

-  Trim Line
-  Fold Line
-  3mm Safety Area - *Important text and logos should not be in this area.*
-  3mm Required Bleed Area - *Background should extend to this line.*

**PAGINATION GUIDE**

36-1	10-27
2-35	26-11
34-3	12-25
4-33	24-13
32-5	14-23
6-31	22-15
50-7	16-21
8-29	20-17
28-9	18-19

**AVAILABLE PAPER STOCKS \***

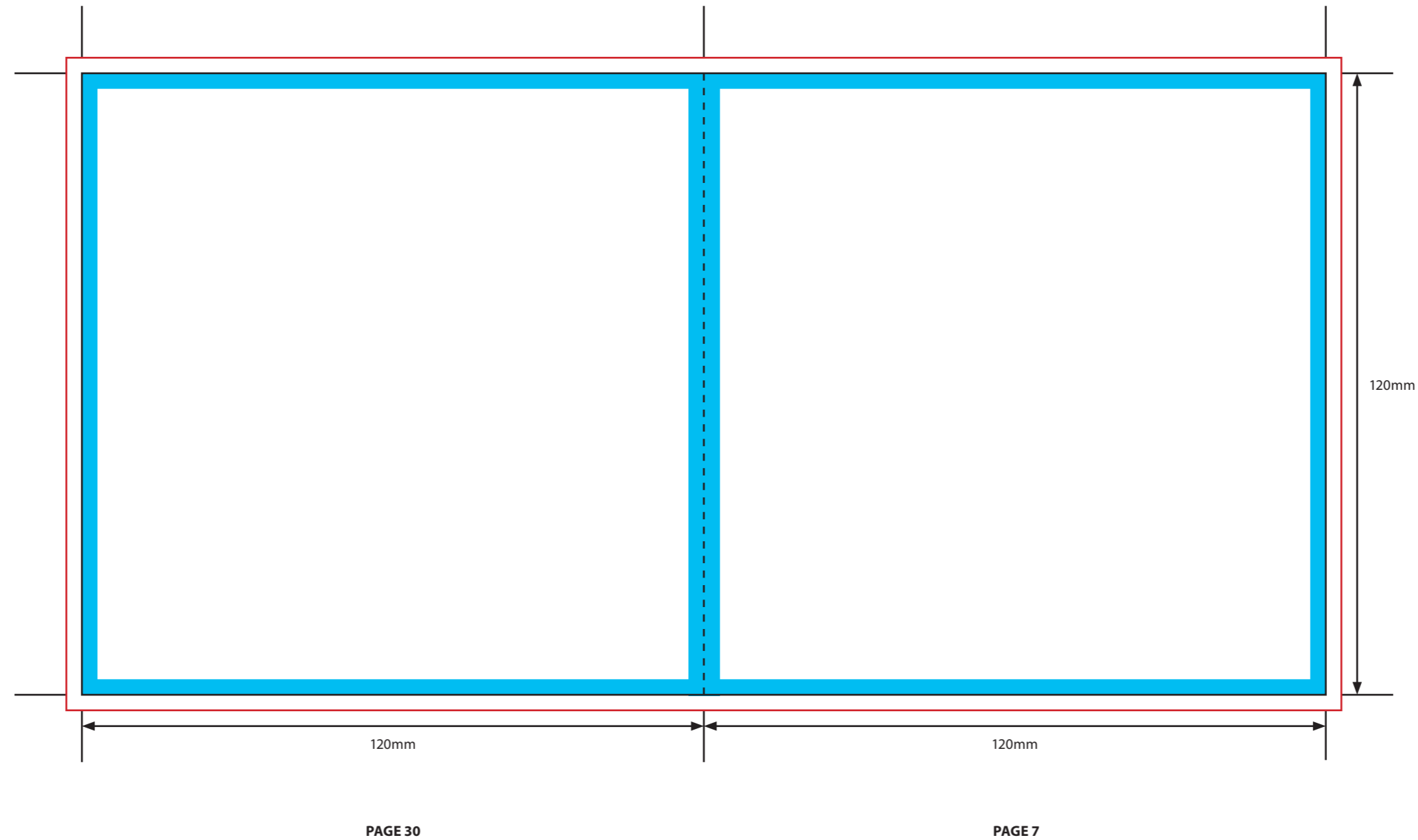
- 130gsm Gloss Art Paper > *Standard*
- 140gsm Offset Uncoated Paper
- Heavier weights available, please ask

**PAPER FINISHES AVAILABLE**





- Gloss Machine Varnish > *Standard*
- Matt Machine Varnish
- Offset (Uncoated)
- Gloss UV
- Matt Lamination

Please click [here](#) for useful information on the best way to set up and supply your artwork.  
For any further questions please email our design team [here](#).

Please ask your account manager if you would like to change the stock and/or finish, as prices may vary.  
\* Please note, not all card stocks are available on all templates. Please check with your account manager.



**KEY**

-  Trim Line
-  Fold Line
-  3mm Safety Area - *Important text and logos should not be in this area.*
-  3mm Required Bleed Area - *Background should extend to this line.*

**PAGINATION GUIDE**

36-1	10-27
2-35	26-11
34-3	12-25
4-33	24-13
32-5	14-23
6-31	22-15
50-7	16-21
8-29	20-17
28-9	18-19

**AVAILABLE PAPER STOCKS \***

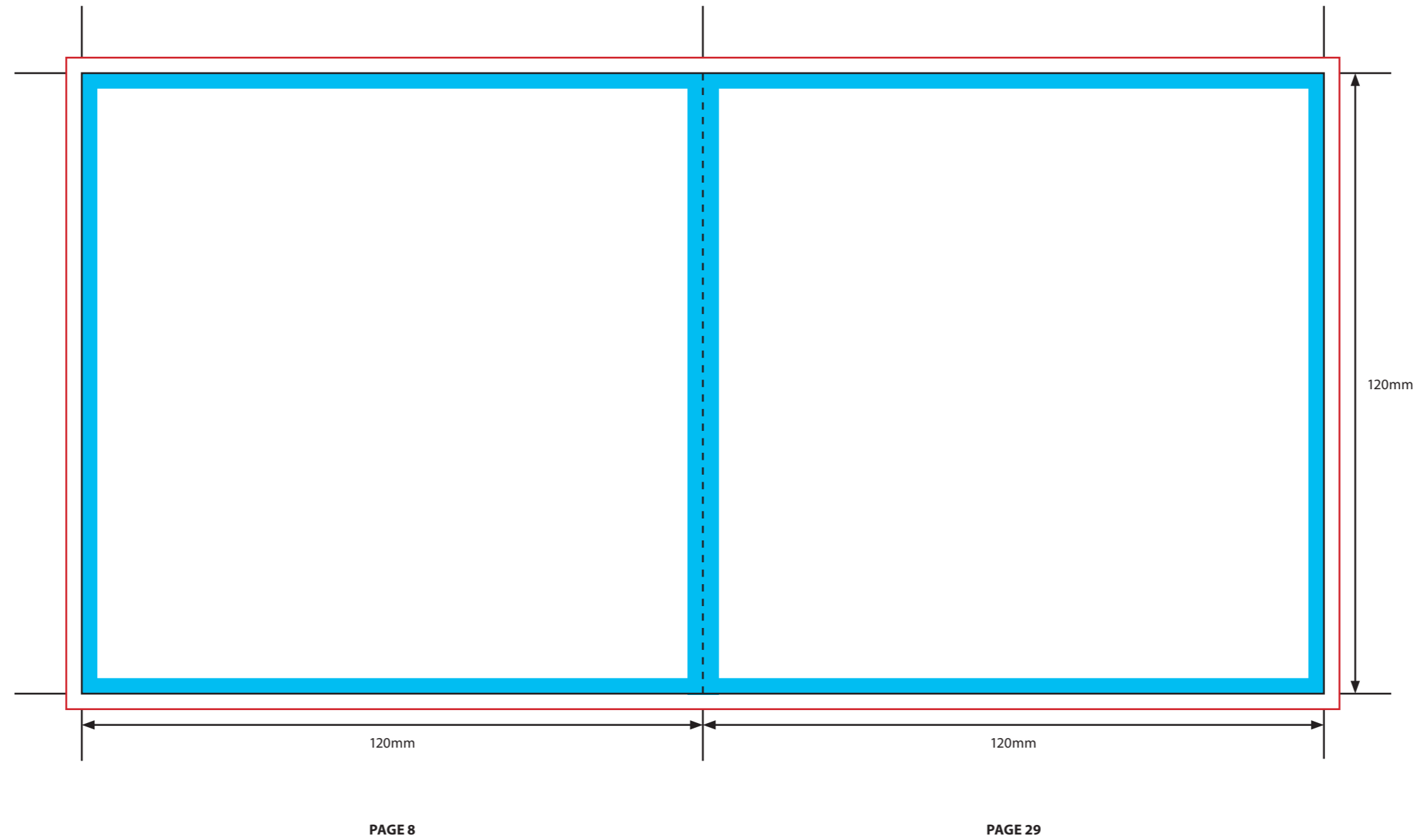
- 130gsm Gloss Art Paper > *Standard*
- 140gsm Offset Uncoated Paper
- Heavier weights available, please ask

**PAPER FINISHES AVAILABLE**

- Gloss Machine Varnish > *Standard*
- Matt Machine Varnish
- Offset (Uncoated)
- Gloss UV
- Matt Lamination

Please click [here](#) for useful information on the best way to set up and supply your artwork.  
For any further questions please email our design team [here](#).

Please ask your account manager if you would like to change the stock and/or finish, as prices may vary.  
\* Please note, not all card stocks are available on all templates. Please check with your account manager.



**KEY**

- Trim Line
- Fold Line
- 3mm Safety Area - *Important text and logos should not be in this area.*
- 3mm Required Bleed Area - *Background should extend to this line.*

**PAGINATION GUIDE**

36-1	10-27
2-35	26-11
34-3	12-25
4-33	24-13
32-5	14-23
6-31	22-15
50-7	16-21
8-29	20-17
28-9	18-19

**AVAILABLE PAPER STOCKS \***

- 130gsm Gloss Art Paper > *Standard*
- 140gsm Offset Uncoated Paper
- Heavier weights available, please ask

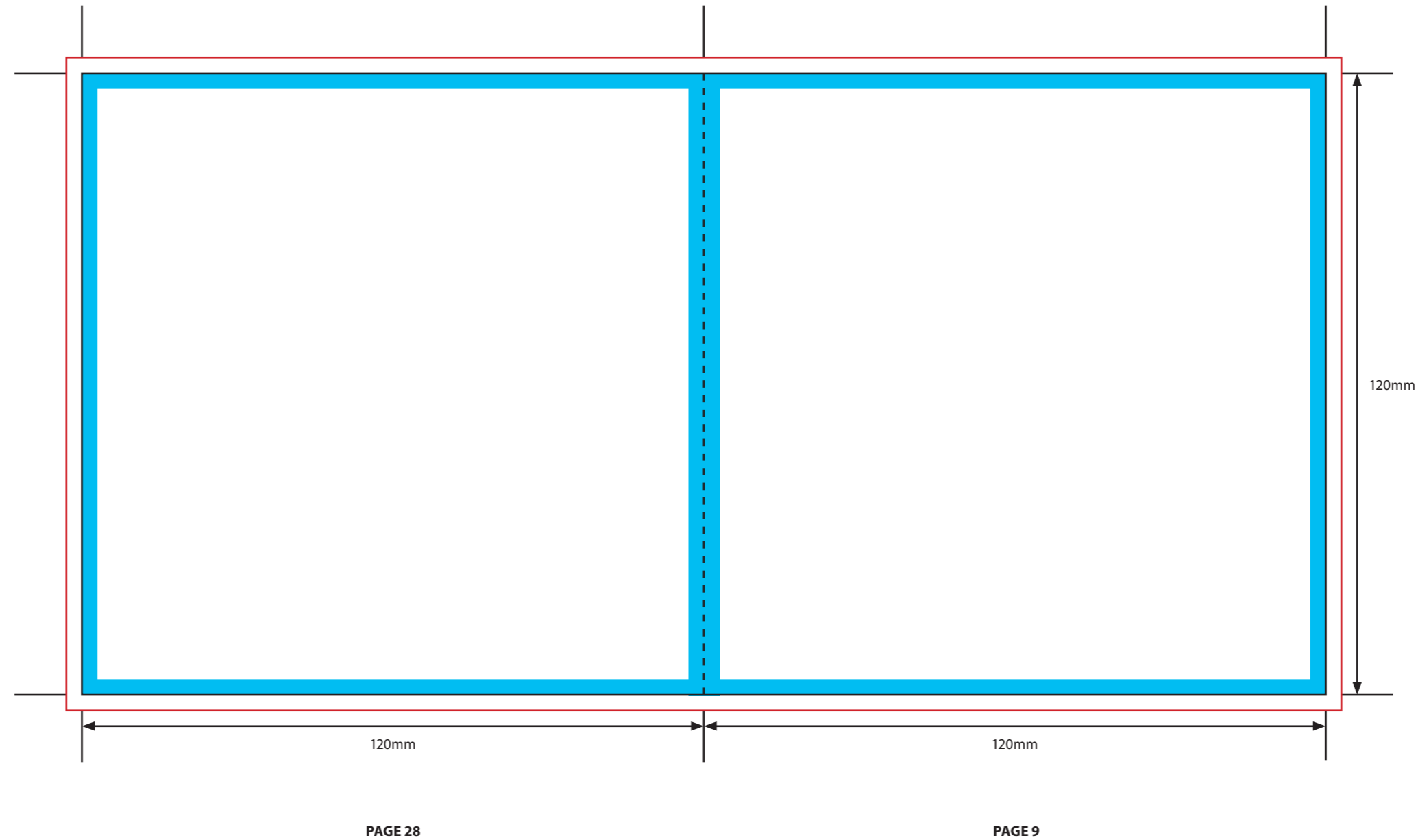
**PAPER FINISHES AVAILABLE**

- Gloss Machine Varnish > *Standard*
- Matt Machine Varnish
- Offset (Uncoated)
- Gloss UV
- Matt Lamination





Please click [here](#) for useful information on the best way to set up and supply your artwork.  
 For any further questions please email our design team [here](#).

Please ask your account manager if you would like to change the stock and/or finish, as prices may vary.  
 \* Please note, not all card stocks are available on all templates. Please check with your account manager.





**KEY**

-  Trim Line
-  Fold Line
-  3mm Safety Area - *Important text and logos should not be in this area.*
-  3mm Required Bleed Area - *Background should extend to this line.*

**PAGINATION GUIDE**

36-1	10-27
2-35	26-11
34-3	12-25
4-33	24-13
32-5	14-23
6-31	22-15
50-7	16-21
8-29	20-17
28-9	18-19

**AVAILABLE PAPER STOCKS \***

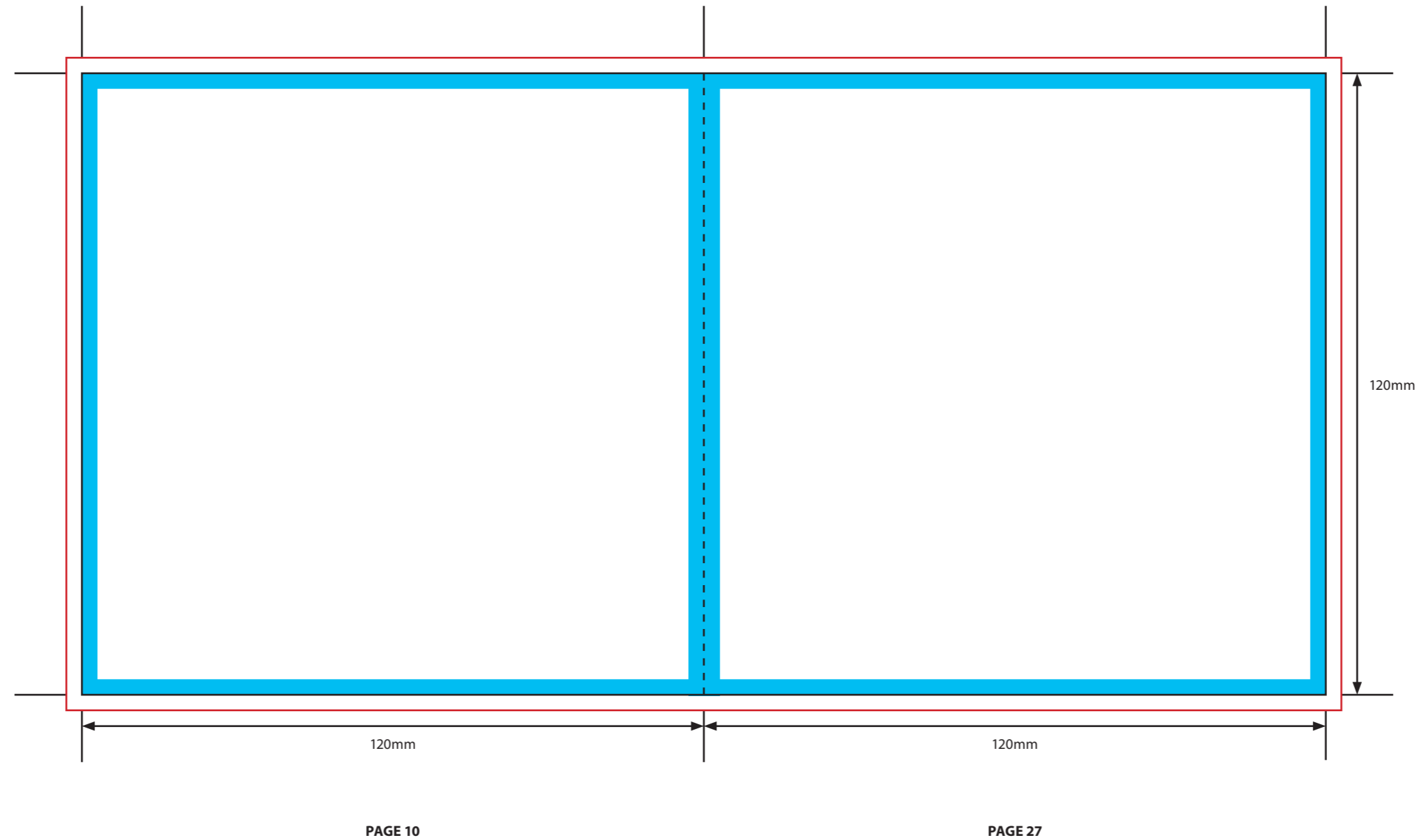
- 130gsm Gloss Art Paper > *Standard*
- 140gsm Offset Uncoated Paper
- Heavier weights available, please ask

**PAPER FINISHES AVAILABLE**





- Gloss Machine Varnish > *Standard*
- Matt Machine Varnish
- Offset (Uncoated)
- Gloss UV
- Matt Lamination

Please click [here](#) for useful information on the best way to set up and supply your artwork.  
For any further questions please email our design team [here](#).

Please ask your account manager if you would like to change the stock and/or finish, as prices may vary.  
\* Please note, not all card stocks are available on all templates. Please check with your account manager.



**KEY**

-  Trim Line
-  Fold Line
-  3mm Safety Area - *Important text and logos should not be in this area.*
-  3mm Required Bleed Area - *Background should extend to this line.*

**PAGINATION GUIDE**

36-1	10-27
2-35	26-11
34-3	12-25
4-33	24-13
32-5	14-23
6-31	22-15
50-7	16-21
8-29	20-17
28-9	18-19

**AVAILABLE PAPER STOCKS \***

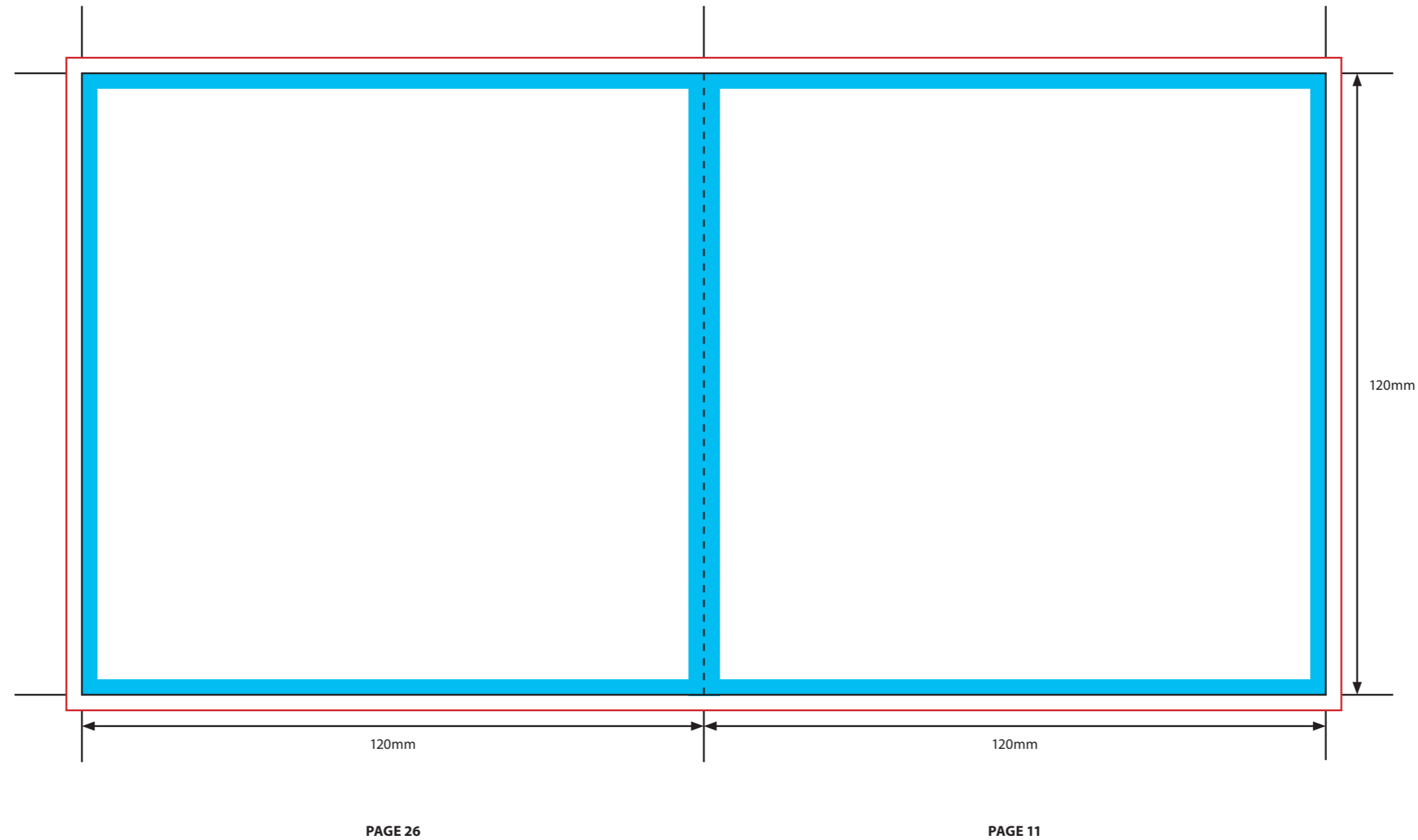
- 130gsm Gloss Art Paper > *Standard*
- 140gsm Offset Uncoated Paper
- Heavier weights available, please ask

**PAPER FINISHES AVAILABLE**





- Gloss Machine Varnish > *Standard*
- Matt Machine Varnish
- Offset (Uncoated)
- Gloss UV
- Matt Lamination

Please click [here](#) for useful information on the best way to set up and supply your artwork.  
For any further questions please email our design team [here](#).

Please ask your account manager if you would like to change the stock and/or finish, as prices may vary.  
\* Please note, not all card stocks are available on all templates. Please check with your account manager.



**KEY**

-  Trim Line
-  Fold Line
-  3mm Safety Area - Important text and logos should not be in this area.
-  3mm Required Bleed Area - Background should extend to this line.

**PAGINATION GUIDE**

36-1	10-27
2-35	26-11
34-3	12-25
4-33	24-13
32-5	14-23
6-31	22-15
50-7	16-21
8-29	20-17
28-9	18-19

**AVAILABLE PAPER STOCKS \***

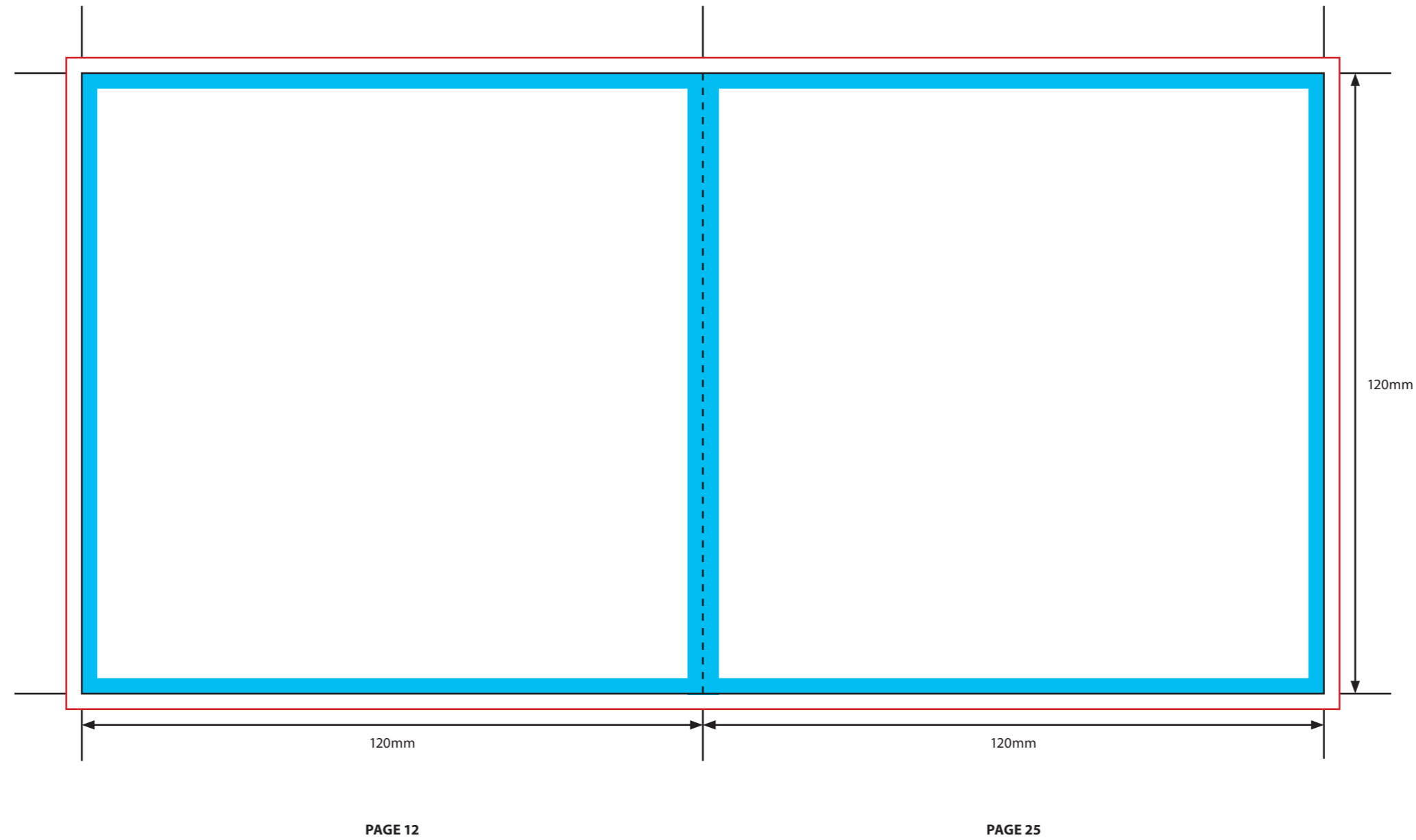
- 130gsm Gloss Art Paper > Standard
- 140gsm Offset Uncoated Paper
- Heavier weights available, please ask

**PAPER FINISHES AVAILABLE**





- Gloss Machine Varnish > Standard
- Matt Machine Varnish
- Offset (Uncoated)
- Gloss UV
- Matt Lamination

Please click [here](#) for useful information on the best way to set up and supply your artwork.  
For any further questions please email our design team [here](#).

Please ask your account manager if you would like to change the stock and/or finish, as prices may vary.  
\* Please note, not all card stocks are available on all templates. Please check with your account manager.



**KEY**

-  Trim Line
-  Fold Line
-  3mm Safety Area - Important text and logos should not be in this area.
-  3mm Required Bleed Area - Background should extend to this line.

**PAGINATION GUIDE**

36-1	10-27
2-35	26-11
34-3	12-25
4-33	24-13
32-5	14-23
6-31	22-15
50-7	16-21
8-29	20-17
28-9	18-19

**AVAILABLE PAPER STOCKS \***

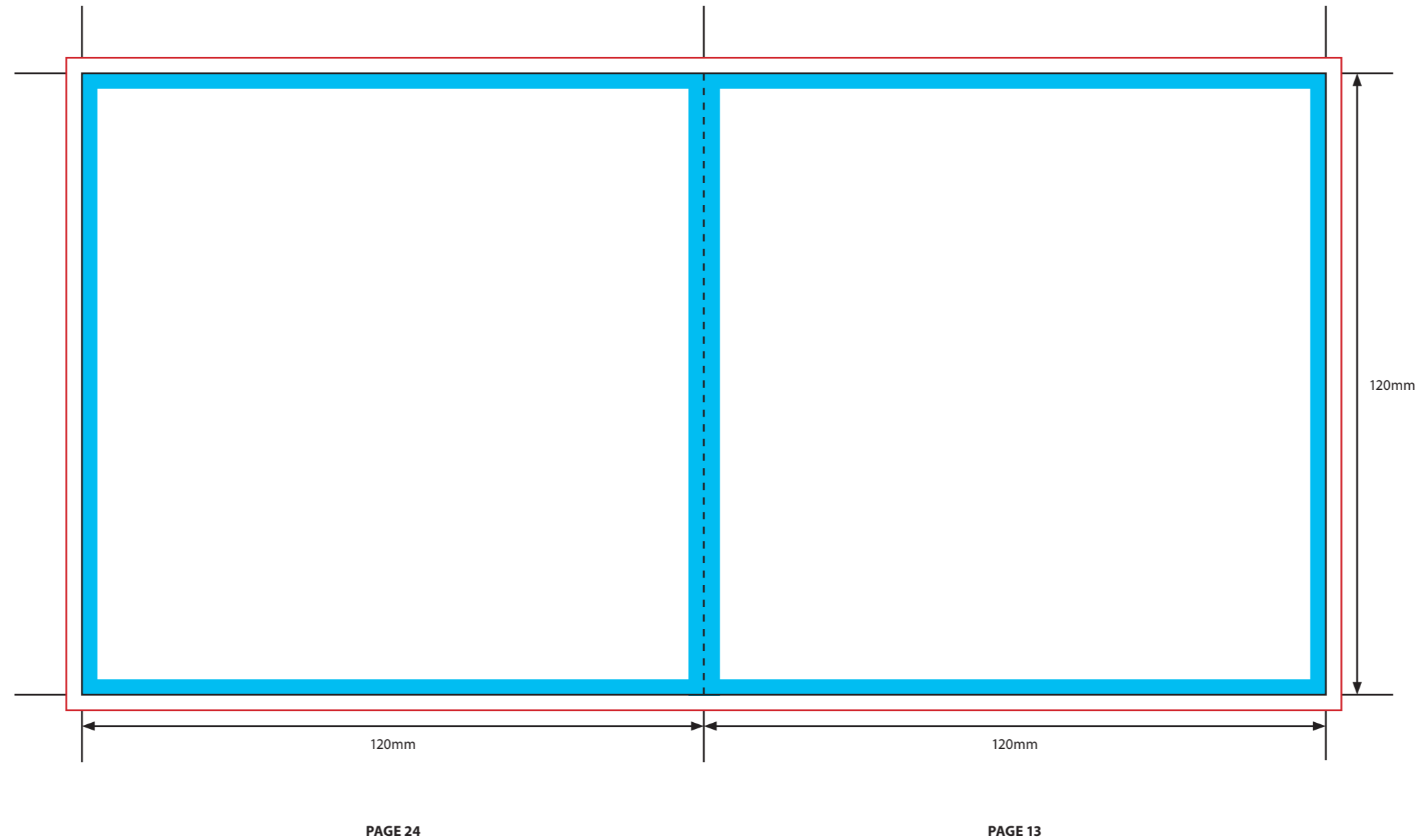
- 130gsm Gloss Art Paper > Standard
- 140gsm Offset Uncoated Paper
- Heavier weights available, please ask

**PAPER FINISHES AVAILABLE**





- Gloss Machine Varnish > Standard
- Matt Machine Varnish
- Offset (Uncoated)
- Gloss UV
- Matt Lamination

Please click [here](#) for useful information on the best way to set up and supply your artwork.  
For any further questions please email our design team [here](#).

Please ask your account manager if you would like to change the stock and/or finish, as prices may vary.  
\* Please note, not all card stocks are available on all templates. Please check with your account manager.



**KEY**

-  Trim Line
-  Fold Line
-  3mm Safety Area - *Important text and logos should not be in this area.*
-  3mm Required Bleed Area - *Background should extend to this line.*

**PAGINATION GUIDE**

36-1	10-27
2-35	26-11
34-3	12-25
4-33	24-13
32-5	14-23
6-31	22-15
50-7	16-21
8-29	20-17
28-9	18-19

**AVAILABLE PAPER STOCKS \***

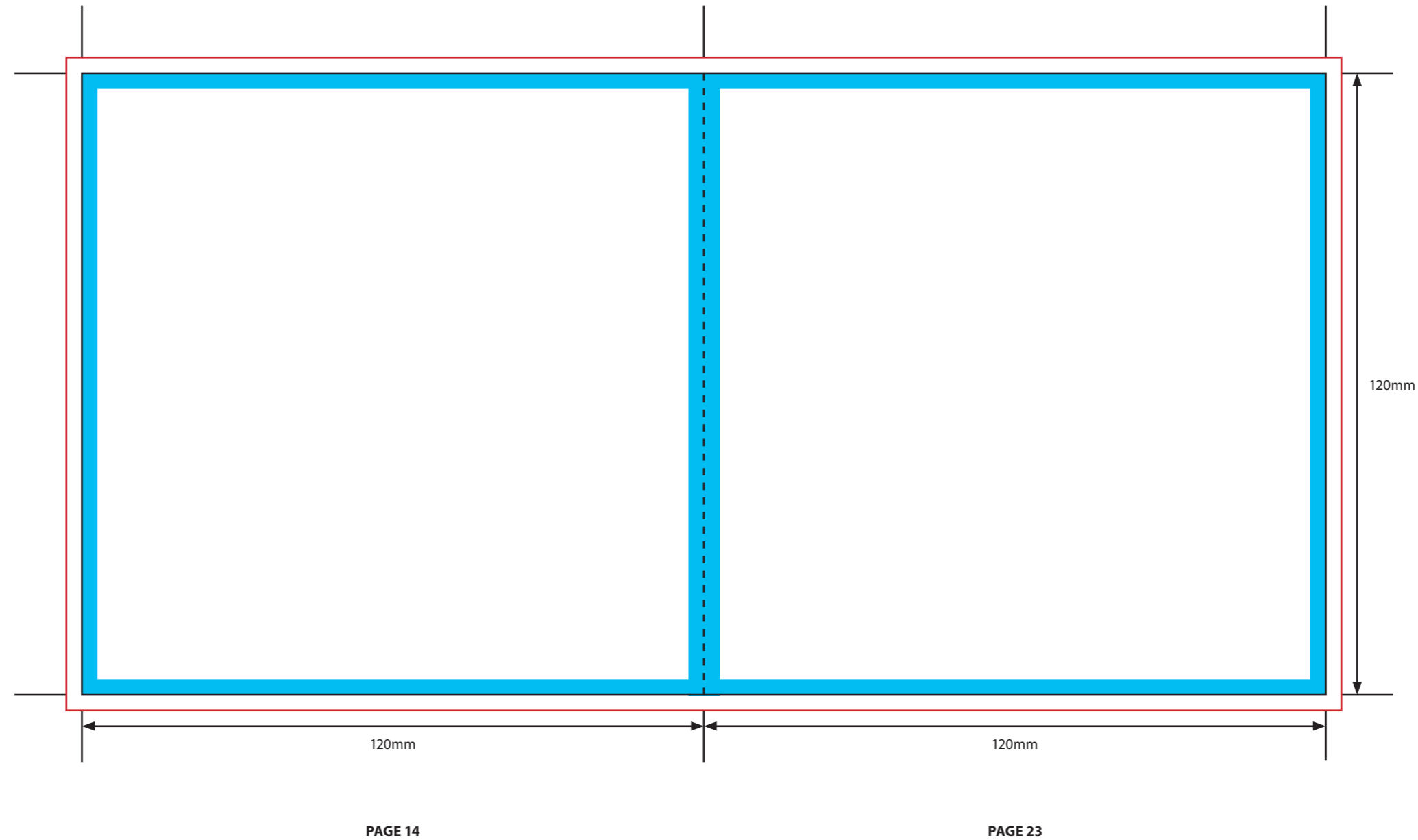
- 130gsm Gloss Art Paper > *Standard*
- 140gsm Offset Uncoated Paper
- Heavier weights available, please ask

**PAPER FINISHES AVAILABLE**





- Gloss Machine Varnish > *Standard*
- Matt Machine Varnish
- Offset (Uncoated)
- Gloss UV
- Matt Lamination

Please click [here](#) for useful information on the best way to set up and supply your artwork.  
For any further questions please email our design team [here](#).

Please ask your account manager if you would like to change the stock and/or finish, as prices may vary.  
\* Please note, not all card stocks are available on all templates. Please check with your account manager.



**KEY**

-  Trim Line
-  Fold Line
-  3mm Safety Area - *Important text and logos should not be in this area.*
-  3mm Required Bleed Area - *Background should extend to this line.*

**PAGINATION GUIDE**

36-1	10-27
2-35	26-11
34-3	12-25
4-33	24-13
32-5	14-23
6-31	22-15
50-7	16-21
8-29	20-17
28-9	18-19

**AVAILABLE PAPER STOCKS \***

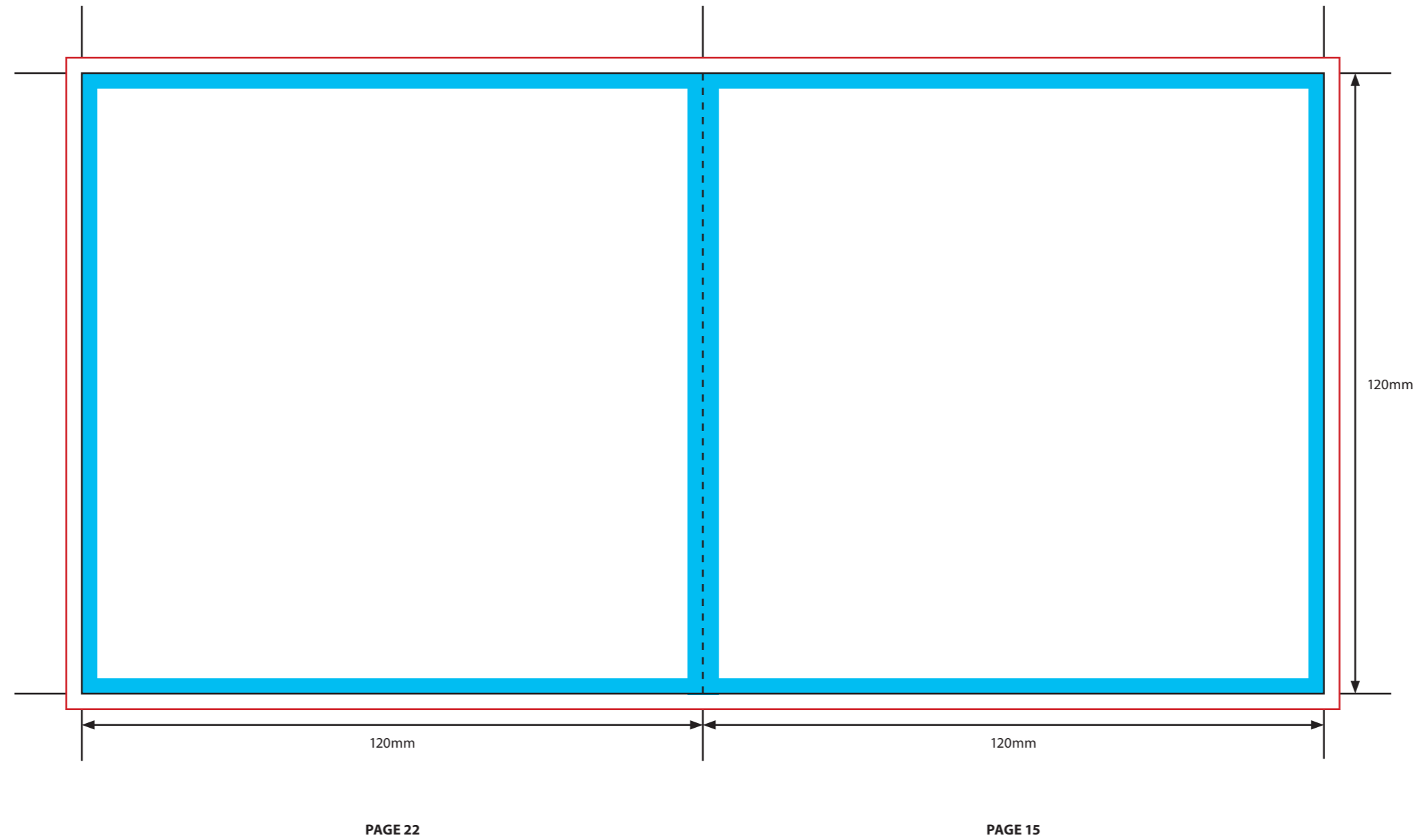
- 130gsm Gloss Art Paper > *Standard*
- 140gsm Offset Uncoated Paper
- Heavier weights available, please ask

**PAPER FINISHES AVAILABLE**





- Gloss Machine Varnish > *Standard*
- Matt Machine Varnish
- Offset (Uncoated)
- Gloss UV
- Matt Lamination

Please click [here](#) for useful information on the best way to set up and supply your artwork.  
For any further questions please email our design team [here](#).

Please ask your account manager if you would like to change the stock and/or finish, as prices may vary.  
\* Please note, not all card stocks are available on all templates. Please check with your account manager.



**KEY**

-  Trim Line
-  Fold Line
-  3mm Safety Area - *Important text and logos should not be in this area.*
-  3mm Required Bleed Area - *Background should extend to this line.*

**PAGINATION GUIDE**

36-1	10-27
2-35	26-11
34-3	12-25
4-33	24-13
32-5	14-23
6-31	22-15
50-7	16-21
8-29	20-17
28-9	18-19

**AVAILABLE PAPER STOCKS \***

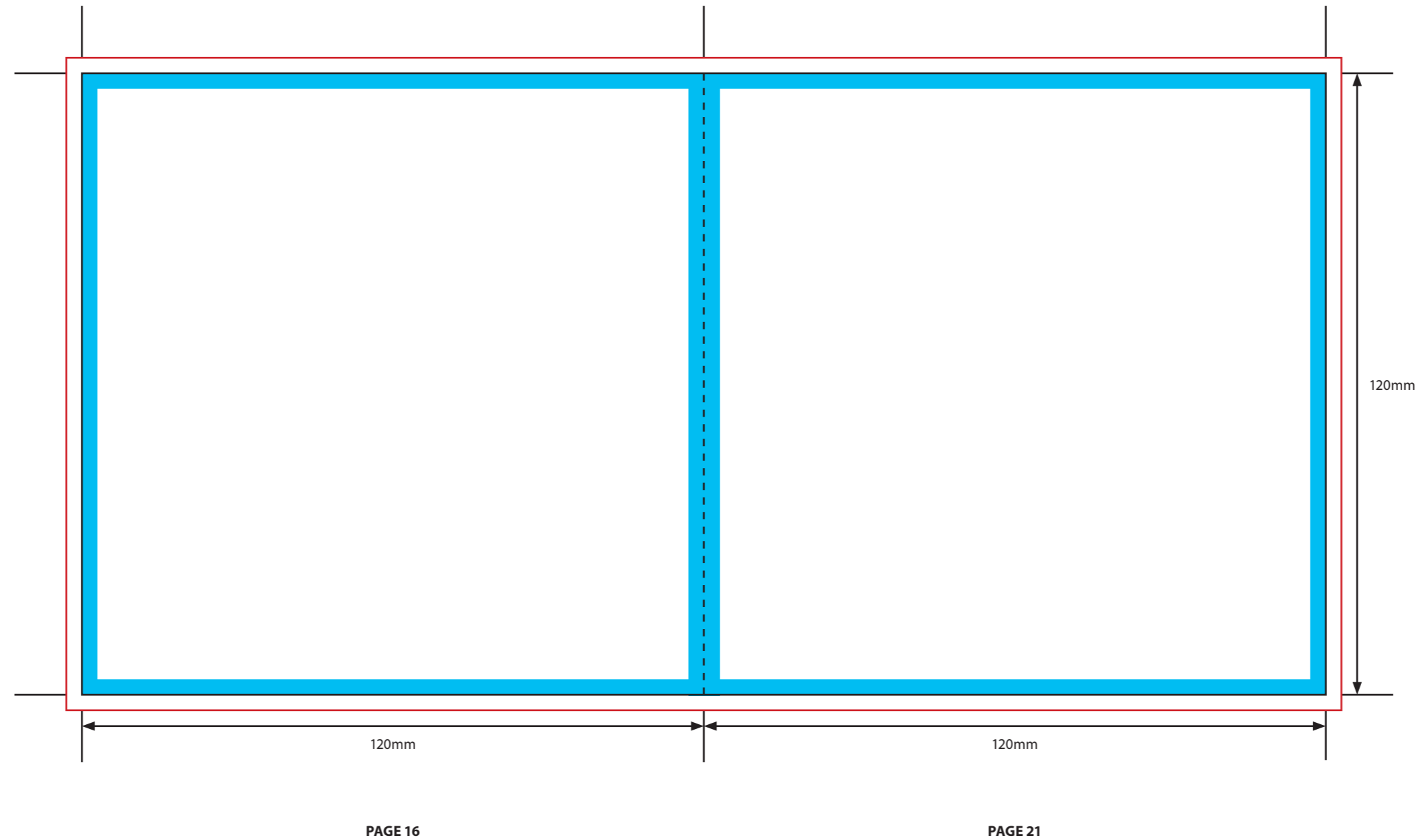
- 130gsm Gloss Art Paper > *Standard*
- 140gsm Offset Uncoated Paper
- Heavier weights available, please ask

**PAPER FINISHES AVAILABLE**





- Gloss Machine Varnish > *Standard*
- Matt Machine Varnish
- Offset (Uncoated)
- Gloss UV
- Matt Lamination

Please click [here](#) for useful information on the best way to set up and supply your artwork.  
For any further questions please email our design team [here](#).

Please ask your account manager if you would like to change the stock and/or finish, as prices may vary.  
\* Please note, not all card stocks are available on all templates. Please check with your account manager.



**KEY**

-  Trim Line
-  Fold Line
-  3mm Safety Area - *Important text and logos should not be in this area.*
-  3mm Required Bleed Area - *Background should extend to this line.*

**PAGINATION GUIDE**

36-1	10-27
2-35	26-11
34-3	12-25
4-33	24-13
32-5	14-23
6-31	22-15
50-7	16-21
8-29	20-17
28-9	18-19

**AVAILABLE PAPER STOCKS \***

- 130gsm Gloss Art Paper > *Standard*
- 140gsm Offset Uncoated Paper
- Heavier weights available, please ask

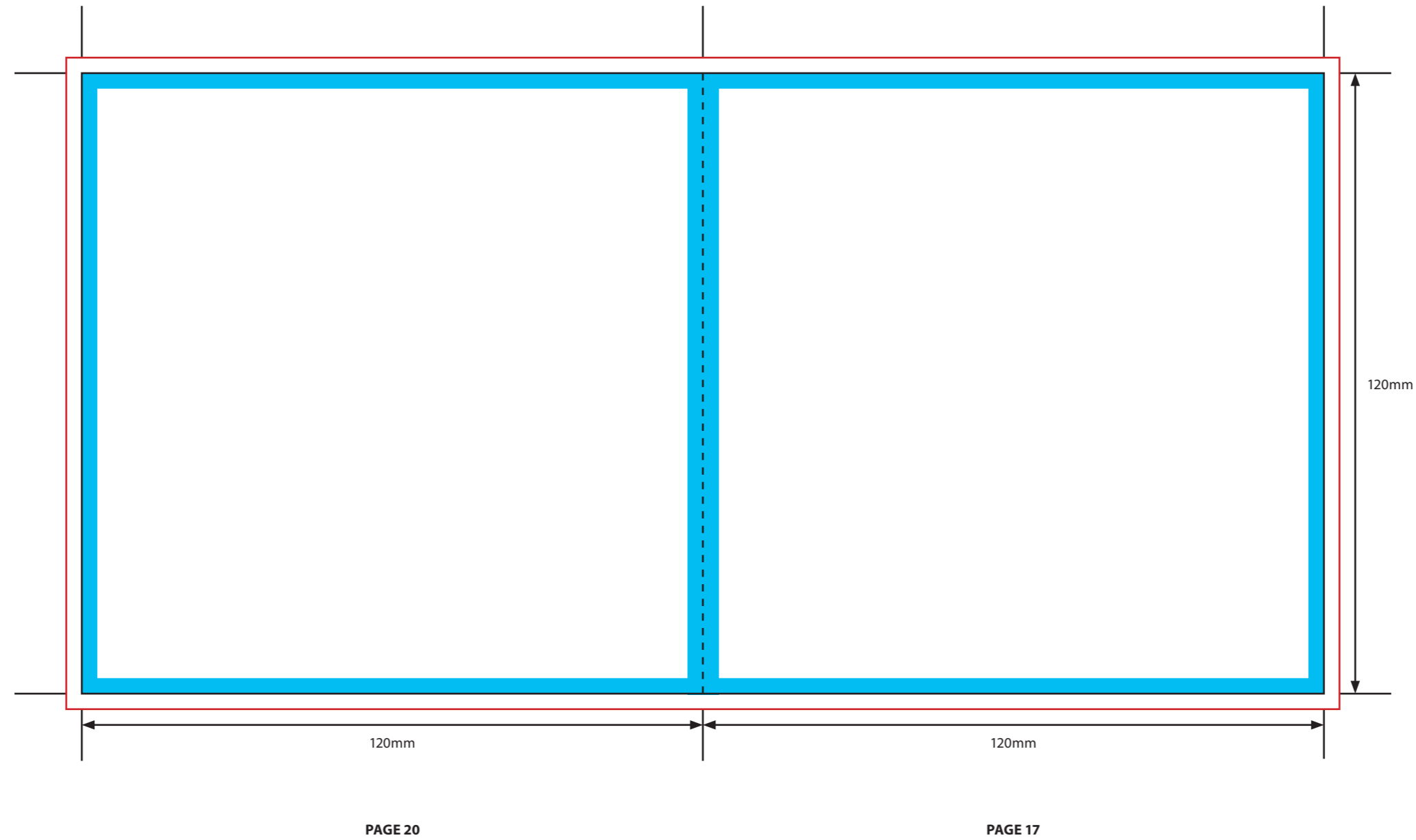
**PAPER FINISHES AVAILABLE**

- Gloss Machine Varnish > *Standard*
- Matt Machine Varnish
- Offset (Uncoated)
- Gloss UV
- Matt Lamination





Please click [here](#) for useful information on the best way to set up and supply your artwork.  
For any further questions please email our design team [here](#).

Please ask your account manager if you would like to change the stock and/or finish, as prices may vary.  
\* Please note, not all card stocks are available on all templates. Please check with your account manager.





**KEY**

-  Trim Line
-  Fold Line
-  3mm Safety Area - *Important text and logos should not be in this area.*
-  3mm Required Bleed Area - *Background should extend to this line.*

**PAGINATION GUIDE**

36-1	10-27
2-35	26-11
34-3	12-25
4-33	24-13
32-5	14-23
6-31	22-15
50-7	16-21
8-29	20-17
28-9	18-19

**AVAILABLE PAPER STOCKS \***

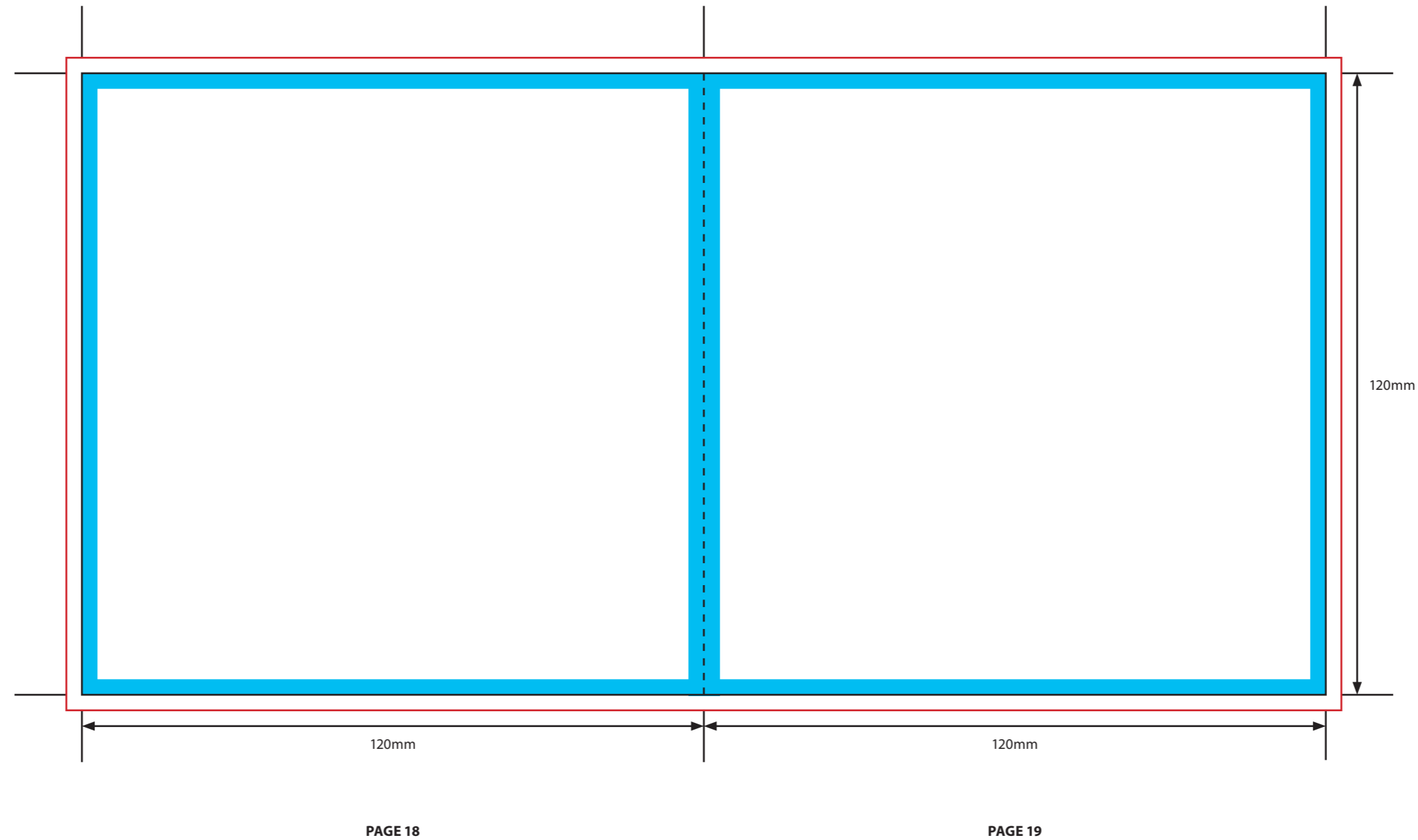
- 130gsm Gloss Art Paper > *Standard*
- 140gsm Offset Uncoated Paper
- Heavier weights available, please ask

**PAPER FINISHES AVAILABLE**





- Gloss Machine Varnish > *Standard*
- Matt Machine Varnish
- Offset (Uncoated)
- Gloss UV
- Matt Lamination

Please click [here](#) for useful information on the best way to set up and supply your artwork.  
For any further questions please email our design team [here](#).

Please ask your account manager if you would like to change the stock and/or finish, as prices may vary.  
\* Please note, not all card stocks are available on all templates. Please check with your account manager.



**KEY**

-  Trim Line
-  Fold Line
-  3mm Safety Area - *Important text and logos should not be in this area.*
-  3mm Required Bleed Area - *Background should extend to this line.*

**PAGINATION GUIDE**

36-1	10-27
2-35	26-11
34-3	12-25
4-33	24-13
32-5	14-23
6-31	22-15
50-7	16-21
8-29	20-17
28-9	18-19

**AVAILABLE PAPER STOCKS \***

- 130gsm Gloss Art Paper > *Standard*
- 140gsm Offset Uncoated Paper
- Heavier weights available, please ask

**PAPER FINISHES AVAILABLE**

- Gloss Machine Varnish > *Standard*
- Matt Machine Varnish
- Offset (Uncoated)
- Gloss UV
- Matt Lamination

Please click [here](#) for useful information on the best way to set up and supply your artwork.  
 For any further questions please email our design team [here](#).

Please ask your account manager if you would like to change the stock and/or finish, as prices may vary.  
 \* Please note, not all card stocks are available on all templates. Please check with your account manager.