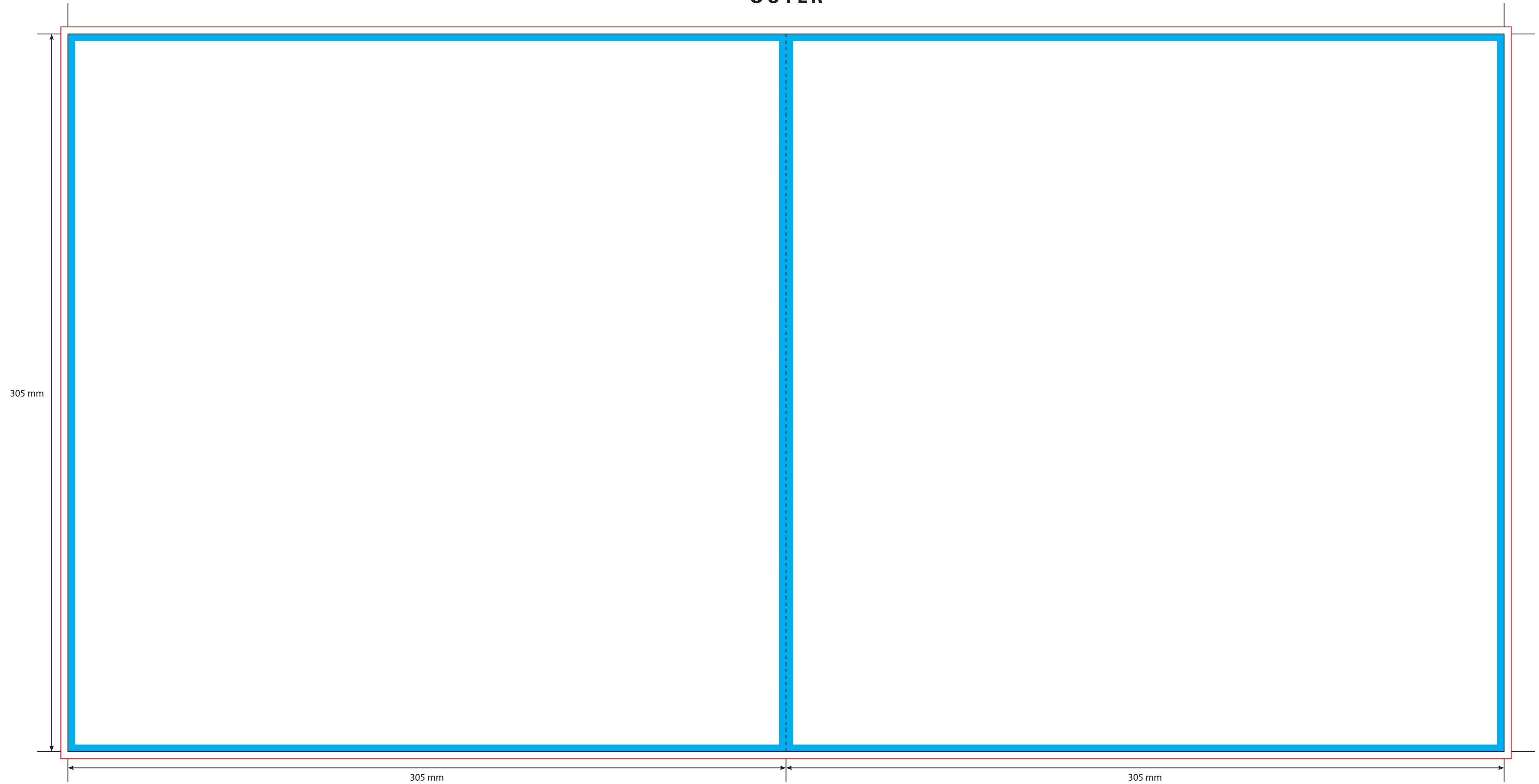


OUTER



KEY

- Trim Line
- - - - - Fold Line
- 3mm Safety Area - *Important text and logos should not be in this area.*
- 3mm Required Bleed Area - *Background should extend to this line.*

AVAILABLE PAPER/CARD STOCKS *

- | | |
|------------------------|-------------------------|
| 150gsm Gloss Art Paper | 190gsm Offset Paper |
| 200gsm Gloss Art Paper | 350gsm White/White Card |
| 250gsm Gloss Art Paper | 300gsm White/White Card |

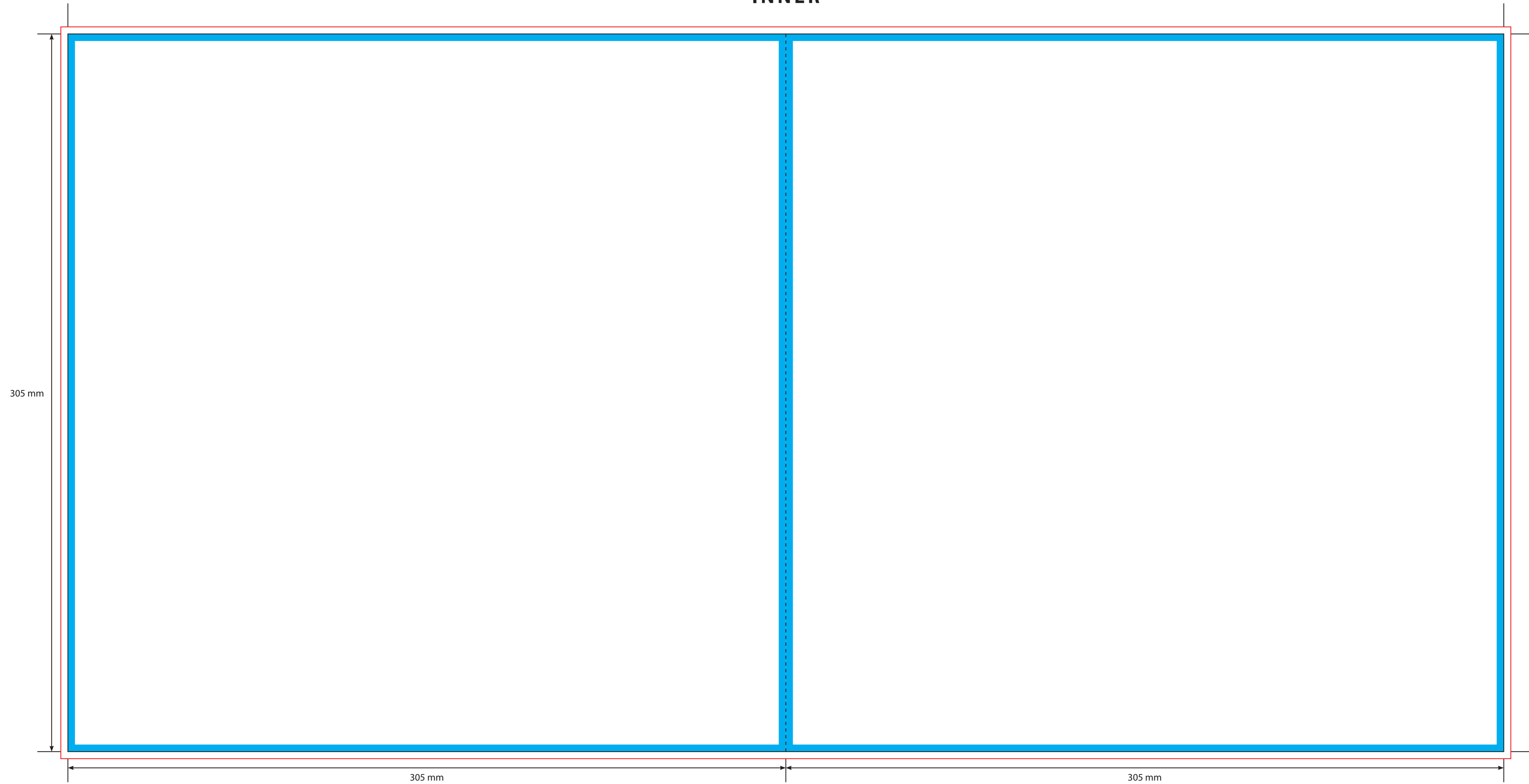
CARD FINISHES AVAILABLE

- Gloss Machine Varnish
- Matt Machine Varnish
- Reverse Board (Uncoated)
- Gloss Lamination
- Matt Lamination

Please click [here](#) for useful information on the best way to set up and supply your artwork.
For any further questions please email our design team [here](#).

Please ask your account manager if you would like to change the stock and/or finish, prices will vary.
* Please note, not all card stocks are available on all templates. Please check with your sales contact.

INNER



- KEY**
- Trim Line
 - - - - - Fold Line
 - 3mm Safety Area - Important text and logos should not be in this area.
 - 3mm Required Bleed Area - Background should extend to this line.

- AVAILABLE PAPER/CARD STOCKS ***
- | | |
|------------------------|-------------------------|
| 150gsm Gloss Art Paper | 190gsm Offset Paper |
| 200gsm Gloss Art Paper | 350gsm White/White Card |
| 250gsm Gloss Art Paper | 300gsm White/White Card |

- CARD FINISHES AVAILABLE**
- Gloss Machine Varnish
 - Matt Machine Varnish
 - Reverse Board (Uncoated)
 - Gloss Lamination
 - Matt Lamination

Please click [here](#) for useful information on the best way to set up and supply your artwork.
For any further questions please email our design team [here](#).

Please ask your account manager if you would like to change the stock and/or finish, prices will vary.
* Please note, not all card stocks are available on all templates. Please check with your sales contact.