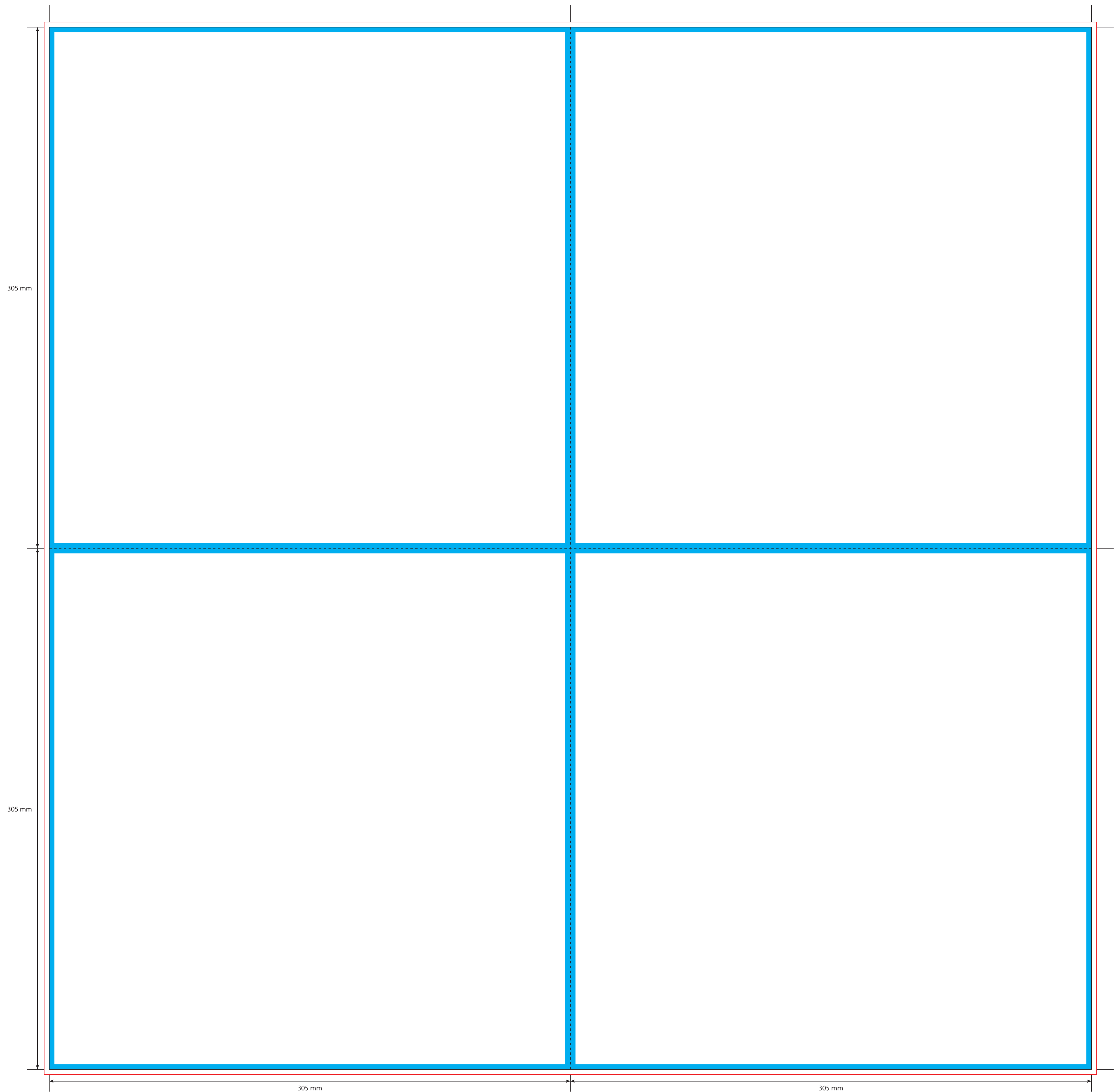


OUTER



KEY
— Trim Line
- - - - - Fold Line
— 3mm Safety Area - Important text and logos should not be in this area.
— 3mm Required Bleed Area - Background should extend to this line.

AVAILABLE PAPER/CARD STOCKS *
150gsm Gloss Art Paper
200gsm Gloss Art Paper
250gsm Gloss Art Paper
190gsm Offset Paper
350gsm White/White Card
300gsm White/White Card

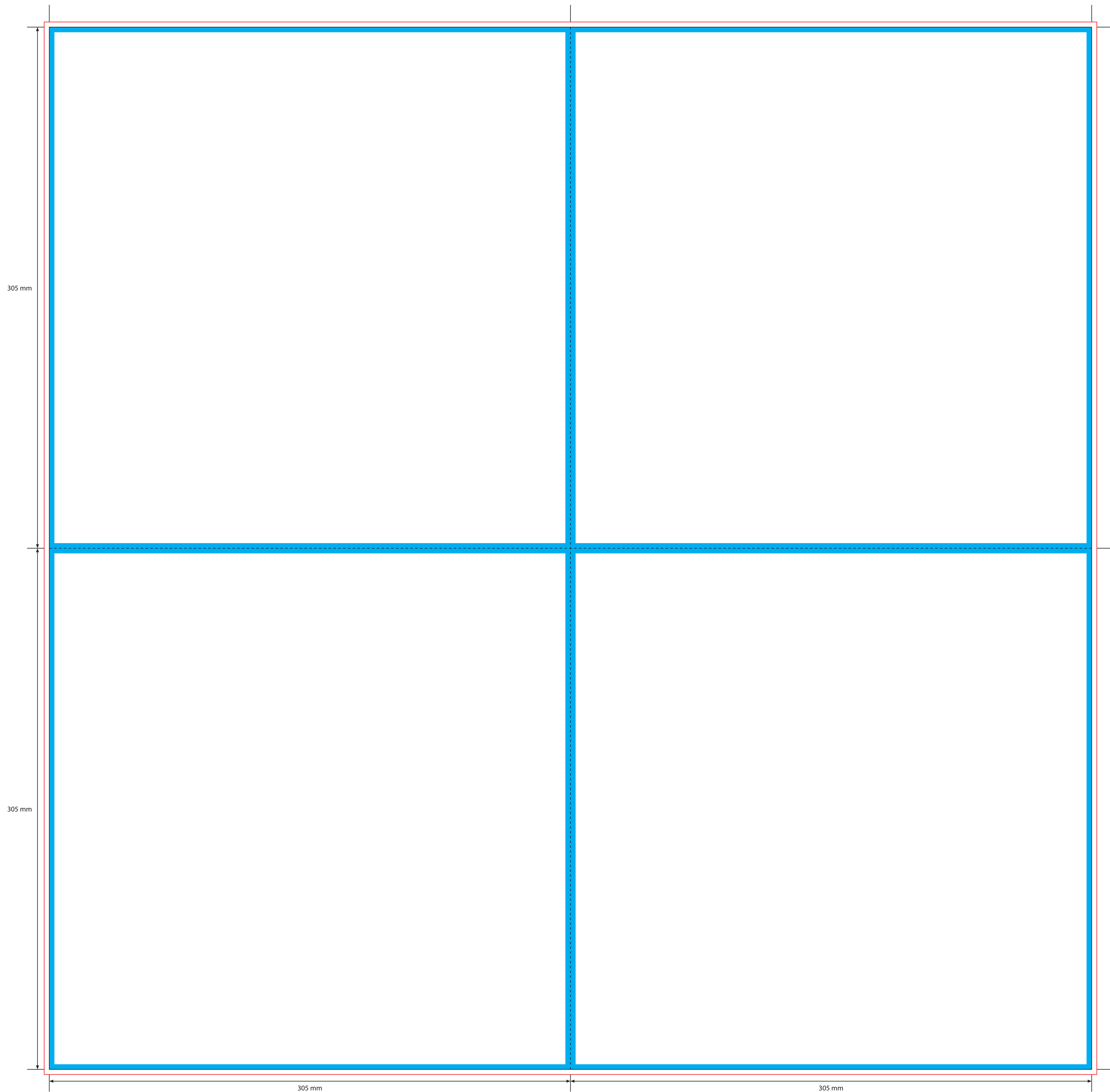
CARD FINISHES AVAILABLE
Gloss Machine Varnish
Matt Machine Varnish
Reverse Board (Uncoated)
Gloss Lamination
Matt Lamination

Please click [here](#) for useful information on the best way to set up and supply your artwork.
For any further questions please email our design team [here](#).

Please ask your account manager if you would like to change the stock and/or finish, prices will vary.
* Please note, not all card stocks are available on all templates. Please check with your sales contact.



INNER



KEY

- Trim Line
- - - - - Fold Line
- 3mm Safety Area - Important text and logos should not be in this area.
- 3mm Required Bleed Area - Background should extend to this line.

AVAILABLE PAPER/CARD STOCKS *

150gsm Gloss Art Paper	190gsm Offset Paper
200gsm Gloss Art Paper	350gsm White/White Card
250gsm Gloss Art Paper	300gsm White/White Card

CARD FINISHES AVAILABLE

- Gloss Machine Varnish
- Matt Machine Varnish
- Reverse Board (Uncoated)
- Gloss Lamination
- Matt Lamination

Please click [here](#) for useful information on the best way to set up and supply your artwork.
For any further questions please email our design team [here](#).

Please ask your account manager if you would like to change the stock and/or finish, prices will vary.
* Please note, not all card stocks are available on all templates. Please check with your sales contact.