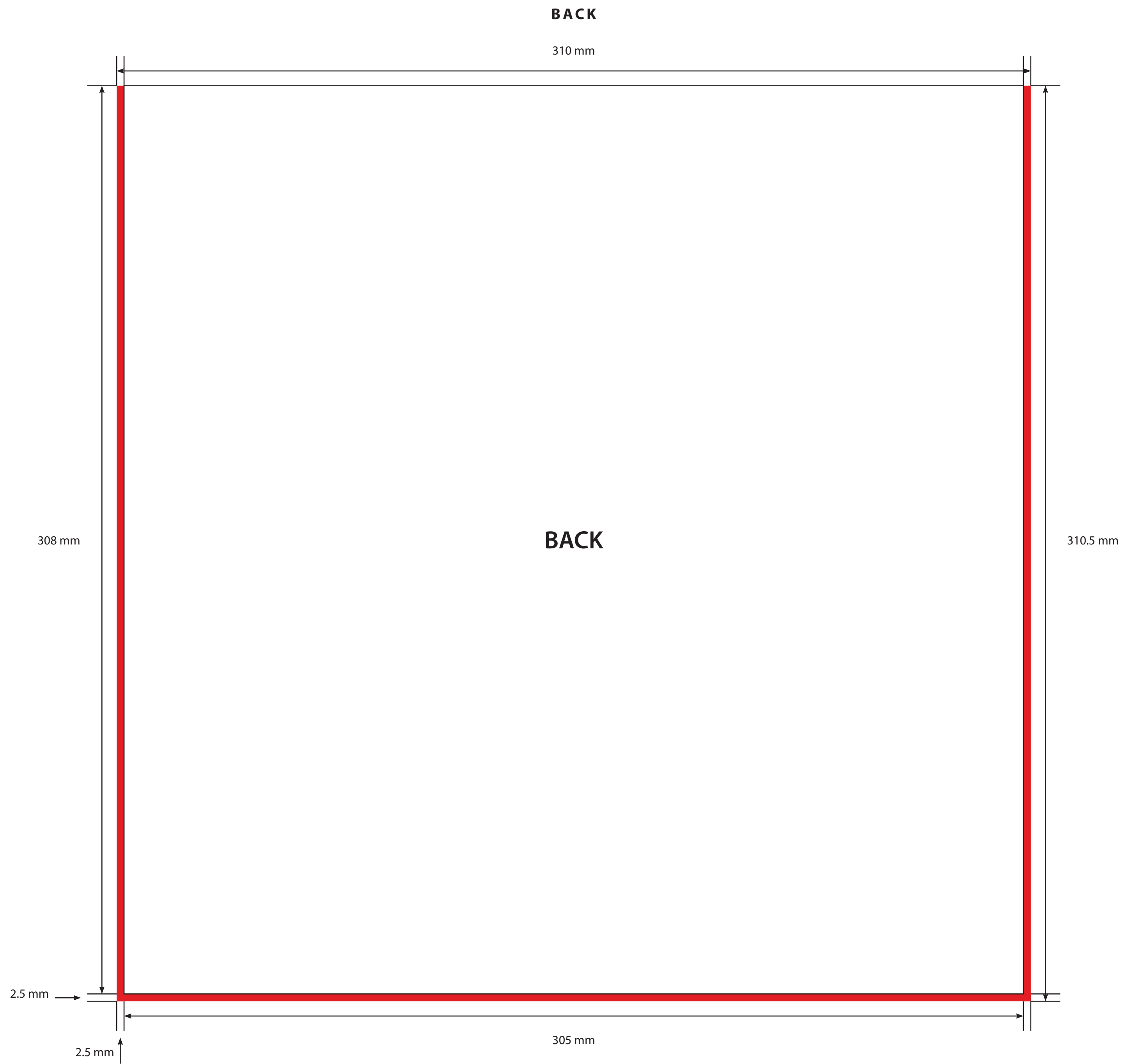


- KEY**
- Trim Line
 - - - - - Fold Line
 - █ 2.5mm Required Weld Area - Background should extend to this line.

Please click [here](#) for useful information on the best way to set up and supply your artwork.
For any further questions please email our design team [here](#).



KEY

- Trim Line
- - - - - Fold Line
- █ 2.5mm Required Weld Area - Background should extend to this line.

Please click [here](#) for useful information on the best way to set up and supply your artwork.
For any further questions please email our design team [here](#).