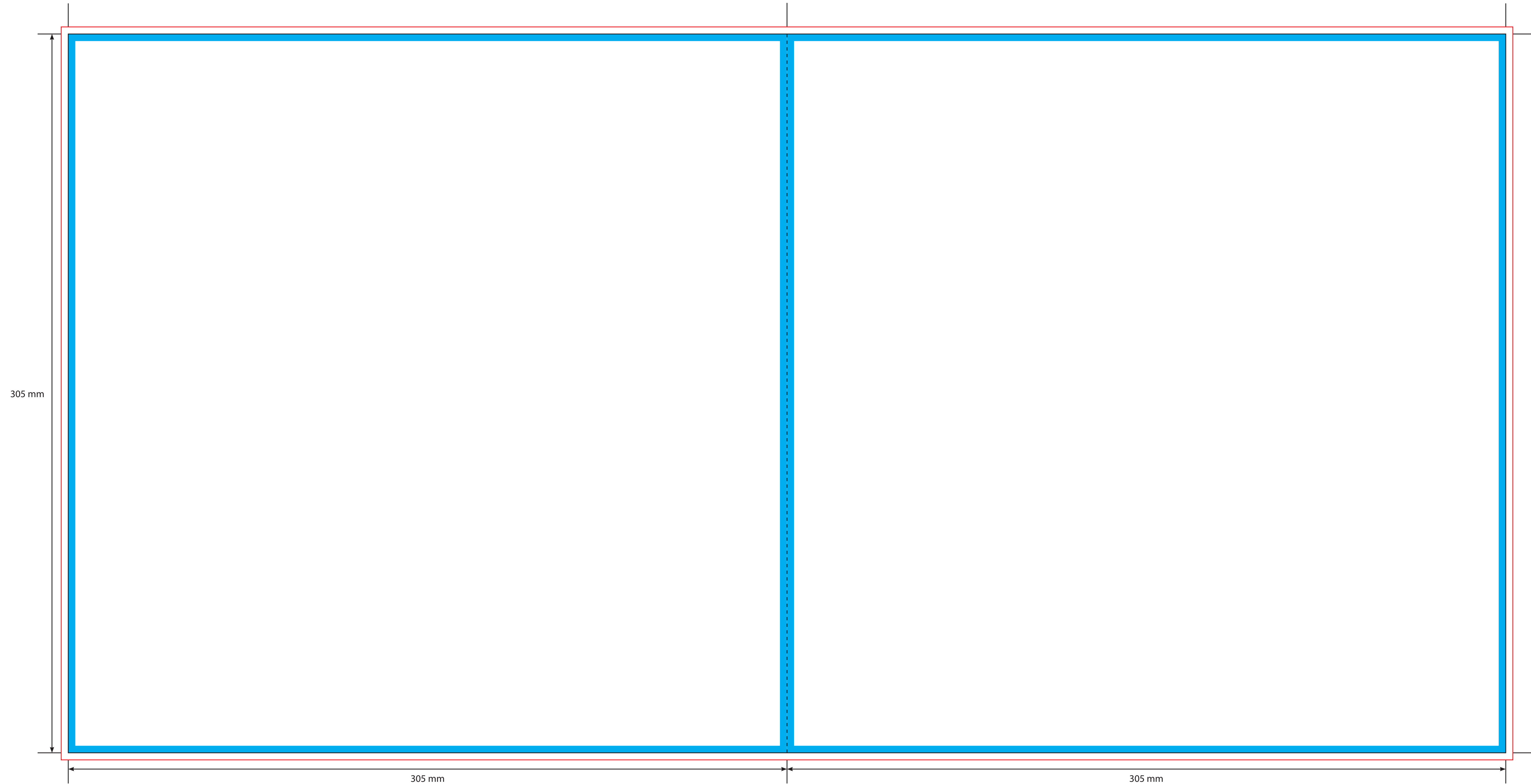


Page 16

Page 1



**KEY**

- Trim Line
- - - - - Fold Line
- 3mm Safety Area - Important text and logos should not be in this area.
- 3mm Required Bleed Area - Background should extend to this line.

**AVAILABLE CARD STOCKS \***

300gsm White/White > Standard  
 300gsm White/Brown  
 280gsm White/Grey  
 350gsm White/White  
 425gsm White/Brown

**CARD FINISHES AVAILABLE**

Gloss Machine Varnish > Standard  
 Matt Machine Varnish  
 Reverse Board (Uncoated)  
 Gloss Lamination  
 Matt Lamination

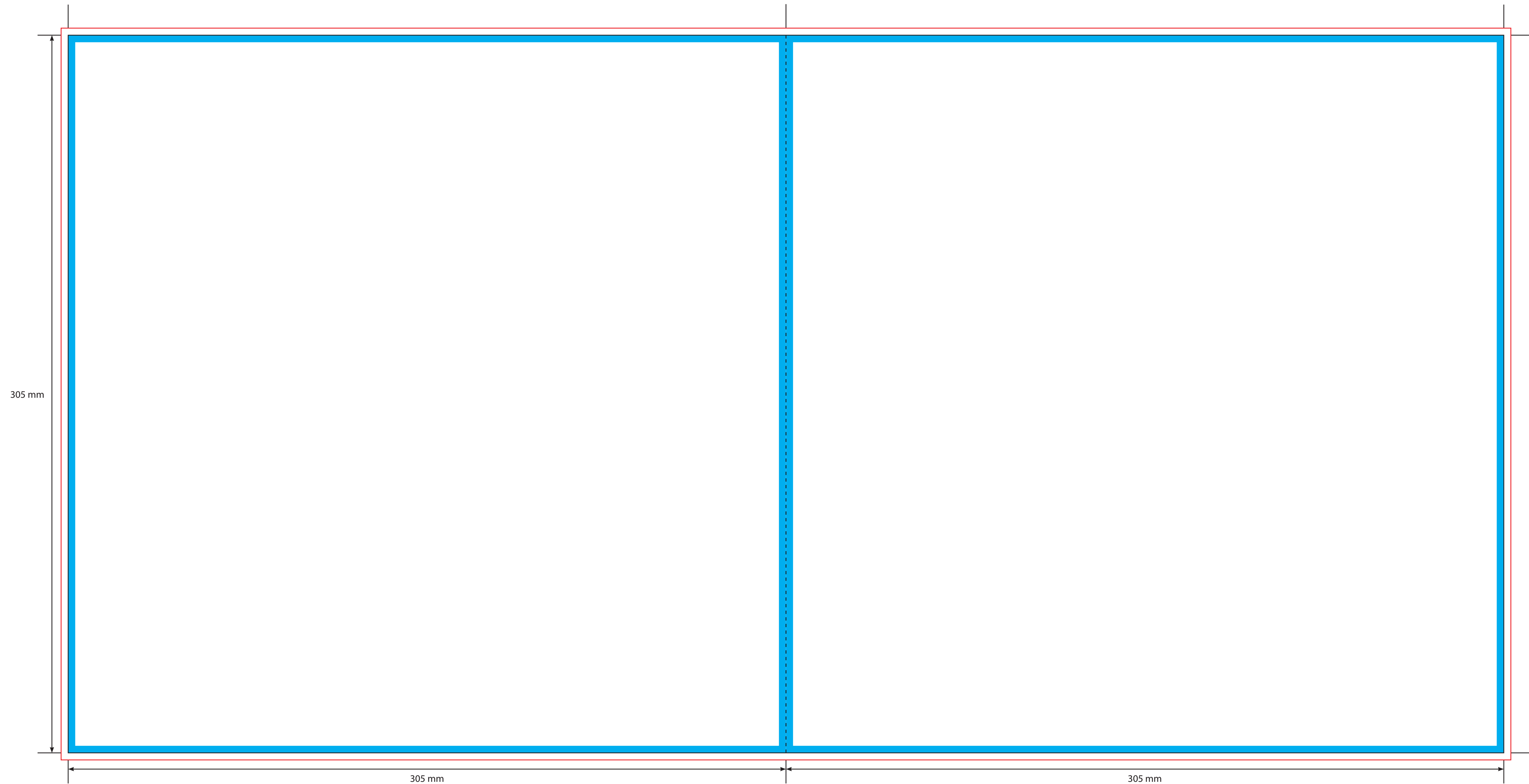
Anti-Scratch Matt Lamination  
 Special Lamination  
 (i.e. Holographic Lamination)

Please click [here](#) for useful information on the best way to set up and supply your artwork.  
 For any further questions please email our design team [here](#).

Please ask your account manager if you would like to change the stock and/or finish, prices will vary.  
 \* Please note, not all card stocks are available on all templates. Please check with your sales contact.

Page 2

Page 15



**KEY**

- Trim Line
- - - - - Fold Line
- 3mm Safety Area - Important text and logos should not be in this area.
- 3mm Required Bleed Area - Background should extend to this line.

**AVAILABLE CARD STOCKS \***

- 300gsm White/White > Standard
- 300gsm White/Brown
- 280gsm White/Grey
- 350gsm White/White
- 425gsm White/Brown

**CARD FINISHES AVAILABLE**

- Gloss Machine Varnish > Standard
- Matt Machine Varnish
- Reverse Board (Uncoated)
- Gloss Lamination
- Matt Lamination

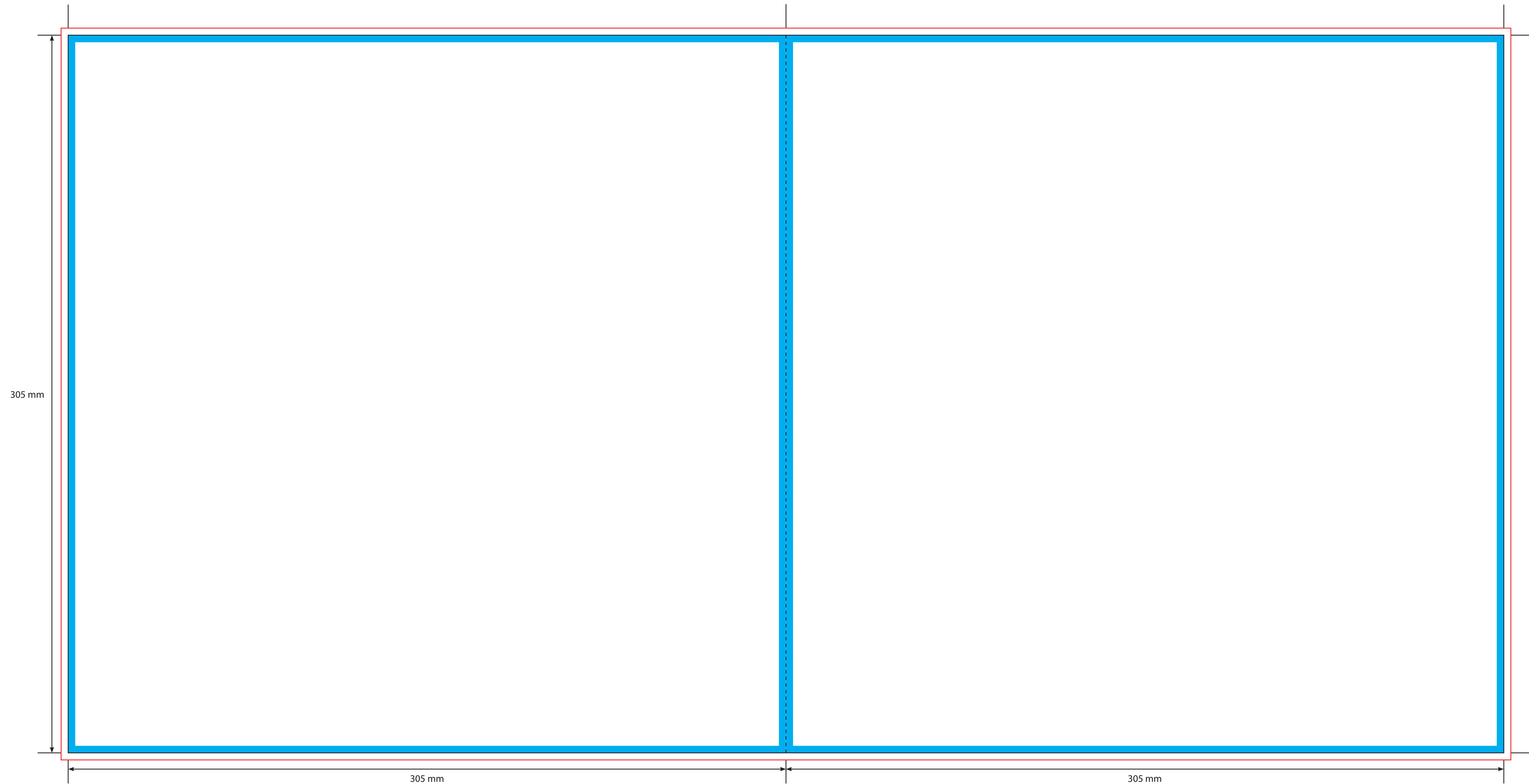
- Anti-Scratch Matt Lamination
- Special Lamination
- (i.e. Holographic Lamination)

Please click [here](#) for useful information on the best way to set up and supply your artwork.  
For any further questions please email our design team [here](#).





Please ask your account manager if you would like to change the stock and/or finish, prices will vary.  
\* Please note, not all card stocks are available on all templates. Please check with your sales contact.

Page 14

Page 3



**KEY**

-  Trim Line
-  Fold Line
-  3mm Safety Area - Important text and logos should not be in this area.
-  3mm Required Bleed Area - Background should extend to this line.

**AVAILABLE CARD STOCKS \***

- 300gsm White/White > Standard
- 300gsm White/Brown
- 280gsm White/Grey
- 350gsm White/White
- 425gsm White/Brown

**CARD FINISHES AVAILABLE**

- Gloss Machine Varnish > Standard
- Matt Machine Varnish
- Reverse Board (Uncoated)
- Gloss Lamination
- Matt Lamination

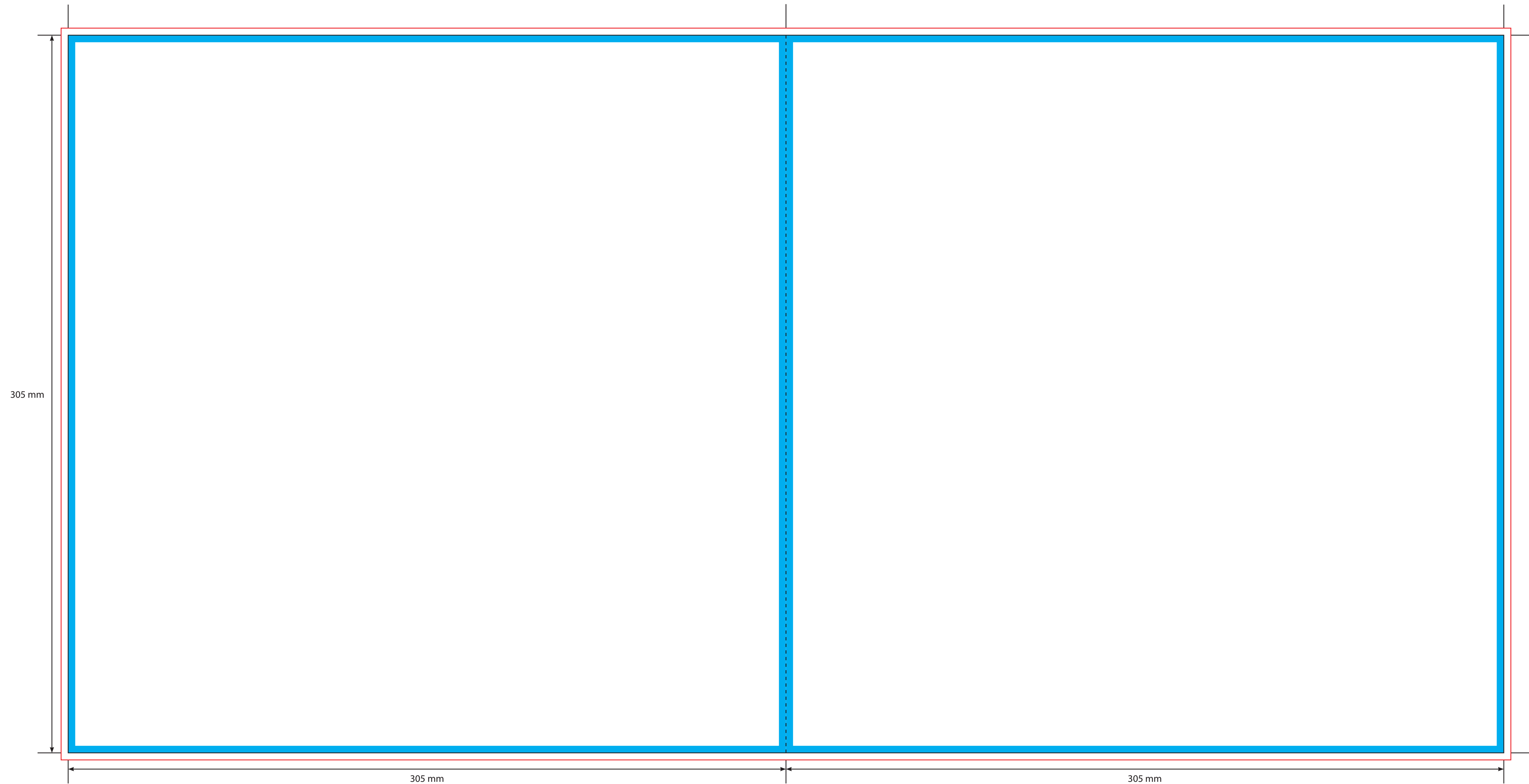
- Anti-Scratch Matt Lamination
- Special Lamination
- (i.e. Holographic Lamination)

Please click [here](#) for useful information on the best way to set up and supply your artwork.  
For any further questions please email our design team [here](#).

Please ask your account manager if you would like to change the stock and/or finish, prices will vary.  
\* Please note, not all card stocks are available on all templates. Please check with your sales contact.

Page 4

Page 13



**KEY**  
 ——— Trim Line  
 - - - - - Fold Line  
 ■ 3mm Safety Area - Important text and logos should not be in this area.  
 ■ 3mm Required Bleed Area - Background should extend to this line.

**AVAILABLE CARD STOCKS \***  
 300gsm White/White > Standard  
 300gsm White/Brown  
 280gsm White/Grey  
 350gsm White/White  
 425gsm White/Brown

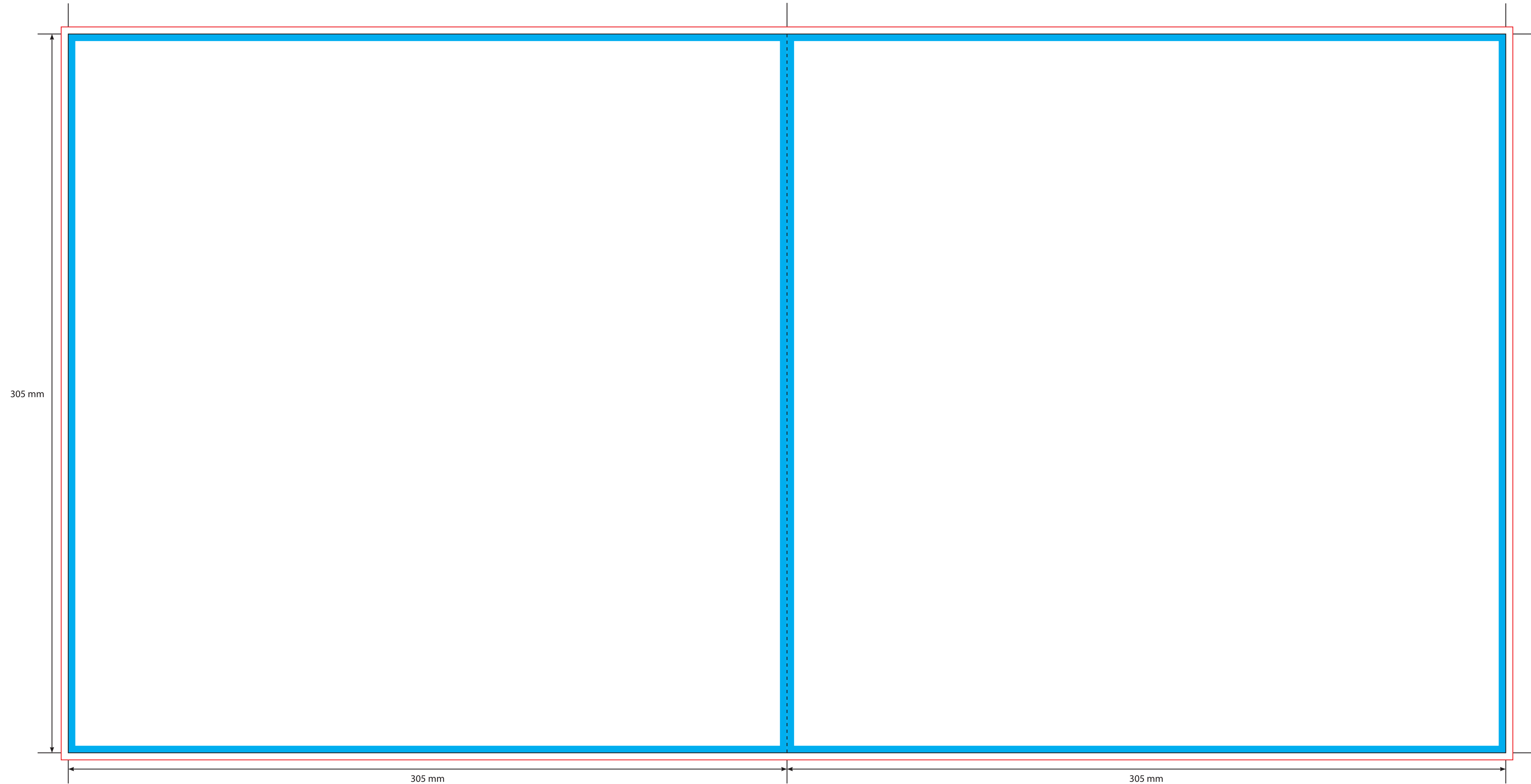
**CARD FINISHES AVAILABLE**  
 Gloss Machine Varnish > Standard  
 Matt Machine Varnish  
 Reverse Board (Uncoated)  
 Gloss Lamination  
 Matt Lamination  
 Anti-Scratch Matt Lamination  
 Special Lamination  
 (i.e. Holographic Lamination)

Please click [here](#) for useful information on the best way to set up and supply your artwork.  
 For any further questions please email our design team [here](#).




Please ask your account manager if you would like to change the stock and/or finish, prices will vary.  
 \* Please note, not all card stocks are available on all templates. Please check with your sales contact.

Page 12

Page 5



**KEY**

-  Trim Line
-  Fold Line
-  3mm Safety Area - Important text and logos should not be in this area.
-  3mm Required Bleed Area - Background should extend to this line.

**AVAILABLE CARD STOCKS \***

- 300gsm White/White > Standard
- 300gsm White/Brown
- 280gsm White/Grey
- 350gsm White/White
- 425gsm White/Brown

**CARD FINISHES AVAILABLE**

- Gloss Machine Varnish > Standard
- Matt Machine Varnish
- Reverse Board (Uncoated)
- Gloss Lamination
- Matt Lamination

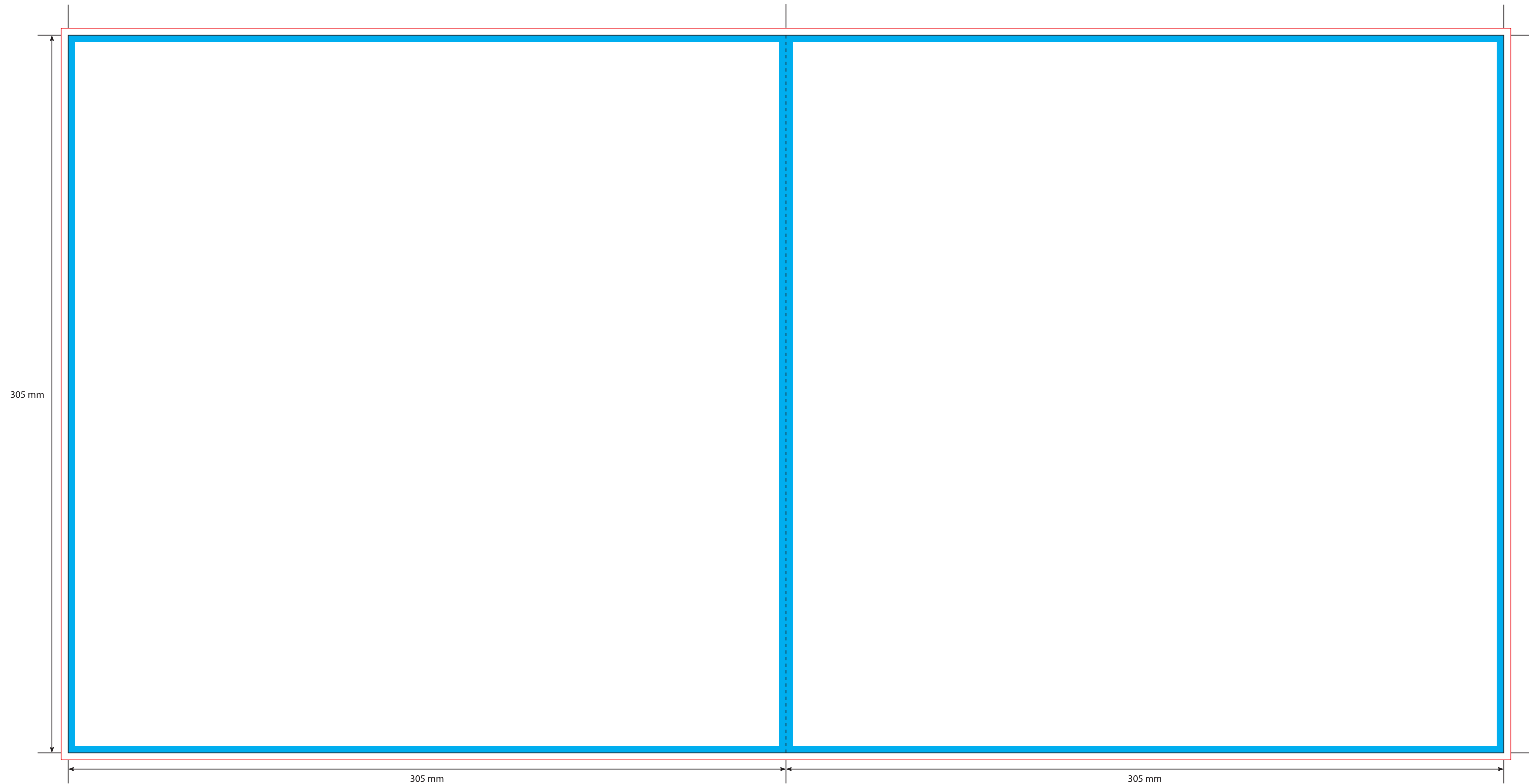
- Anti-Scratch Matt Lamination
- Special Lamination
- (i.e. Holographic Lamination)

Please click [here](#) for useful information on the best way to set up and supply your artwork.  
For any further questions please email our design team [here](#).





Please ask your account manager if you would like to change the stock and/or finish, prices will vary.  
\* Please note, not all card stocks are available on all templates. Please check with your sales contact.

Page 6

Page 11



**KEY**

-  Trim Line
-  Fold Line
-  3mm Safety Area - Important text and logos should not be in this area.
-  3mm Required Bleed Area - Background should extend to this line.

**AVAILABLE CARD STOCKS \***

- 300gsm White/White > Standard
- 300gsm White/Brown
- 280gsm White/Grey
- 350gsm White/White
- 425gsm White/Brown

**CARD FINISHES AVAILABLE**

- Gloss Machine Varnish > Standard
- Matt Machine Varnish
- Reverse Board (Uncoated)
- Gloss Lamination
- Matt Lamination

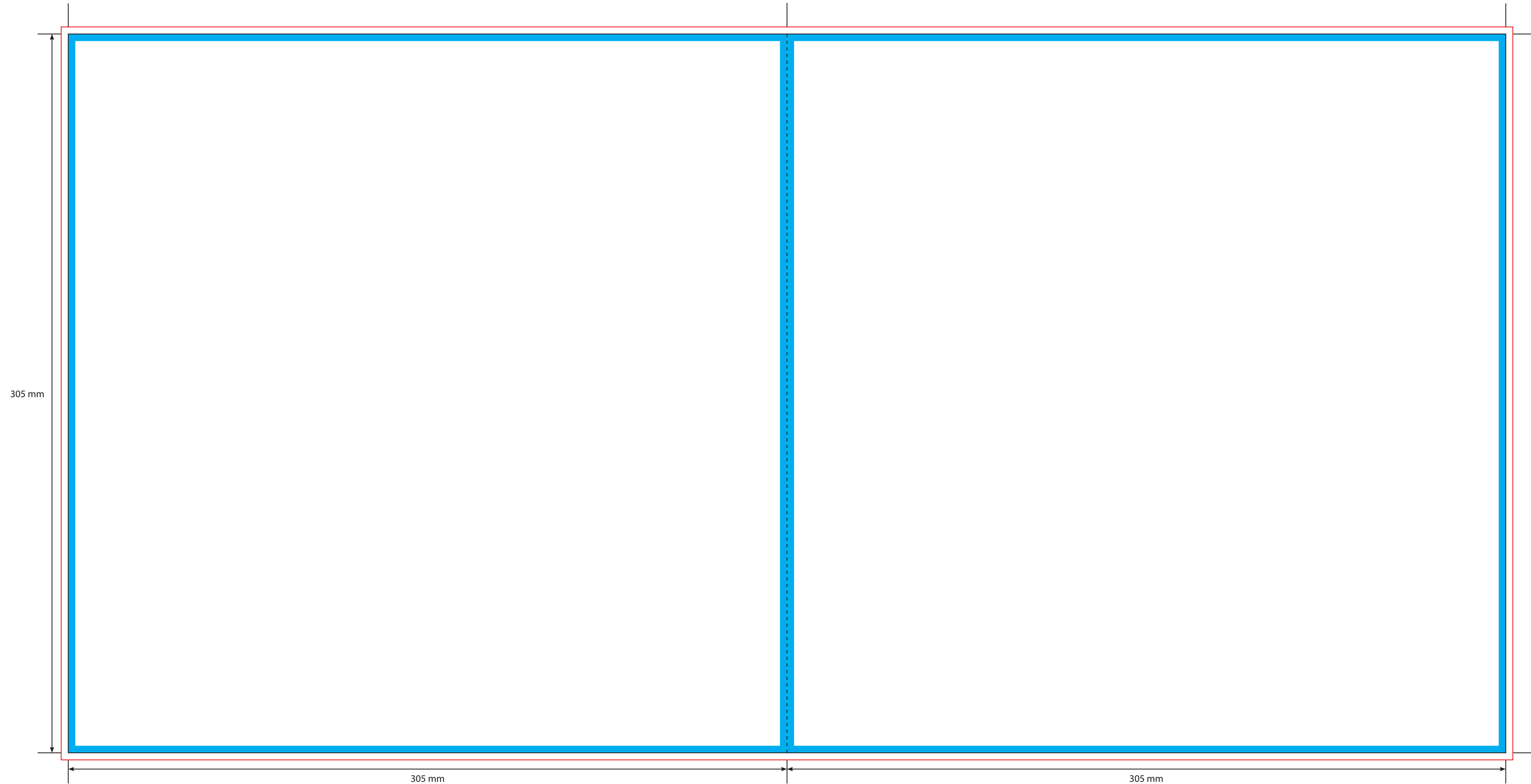
- Anti-Scratch Matt Lamination
- Special Lamination
- (i.e. Holographic Lamination)

Please click [here](#) for useful information on the best way to set up and supply your artwork.  
For any further questions please email our design team [here](#).





Please ask your account manager if you would like to change the stock and/or finish, prices will vary.  
\* Please note, not all card stocks are available on all templates. Please check with your sales contact.

Page 10

Page 7



**KEY**

-  Trim Line
-  Fold Line
-  3mm Safety Area - Important text and logos should not be in this area.
-  3mm Required Bleed Area - Background should extend to this line.

**AVAILABLE CARD STOCKS \***

- 300gsm White/White > Standard
- 300gsm White/Brown
- 280gsm White/Grey
- 350gsm White/White
- 425gsm White/Brown

**CARD FINISHES AVAILABLE**

- Gloss Machine Varnish > Standard
- Matt Machine Varnish
- Reverse Board (Uncoated)
- Gloss Lamination
- Matt Lamination

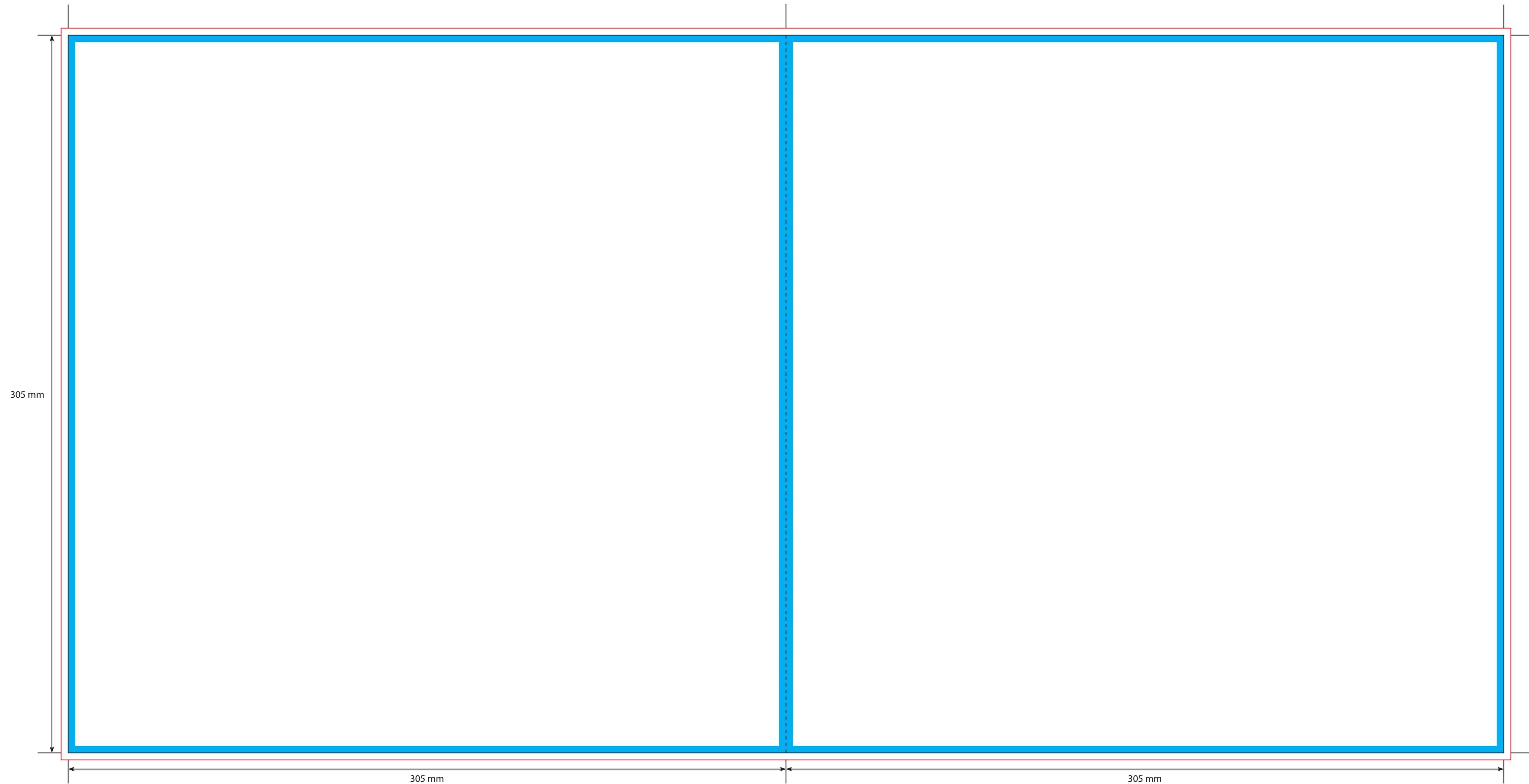
- Anti-Scratch Matt Lamination
- Special Lamination
- (i.e. Holographic Lamination)

Please click [here](#) for useful information on the best way to set up and supply your artwork.  
For any further questions please email our design team [here](#).





Please ask your account manager if you would like to change the stock and/or finish, prices will vary.  
\* Please note, not all card stocks are available on all templates. Please check with your sales contact.

Page 8

Page 9



**KEY**

-  Trim Line
-  Fold Line
-  3mm Safety Area - Important text and logos should not be in this area.
-  3mm Required Bleed Area - Background should extend to this line.

**AVAILABLE CARD STOCKS \***

- 300gsm White/White > Standard
- 300gsm White/Brown
- 280gsm White/Grey
- 350gsm White/White
- 425gsm White/Brown

**CARD FINISHES AVAILABLE**

- Gloss Machine Varnish > Standard
- Matt Machine Varnish
- Reverse Board (Uncoated)
- Gloss Lamination
- Matt Lamination

- Anti-Scratch Matt Lamination
- Special Lamination
- (i.e. Holographic Lamination)

Please click [here](#) for useful information on the best way to set up and supply your artwork.  
For any further questions please email our design team [here](#).

Please ask your account manager if you would like to change the stock and/or finish, prices will vary.  
\* Please note, not all card stocks are available on all templates. Please check with your sales contact.